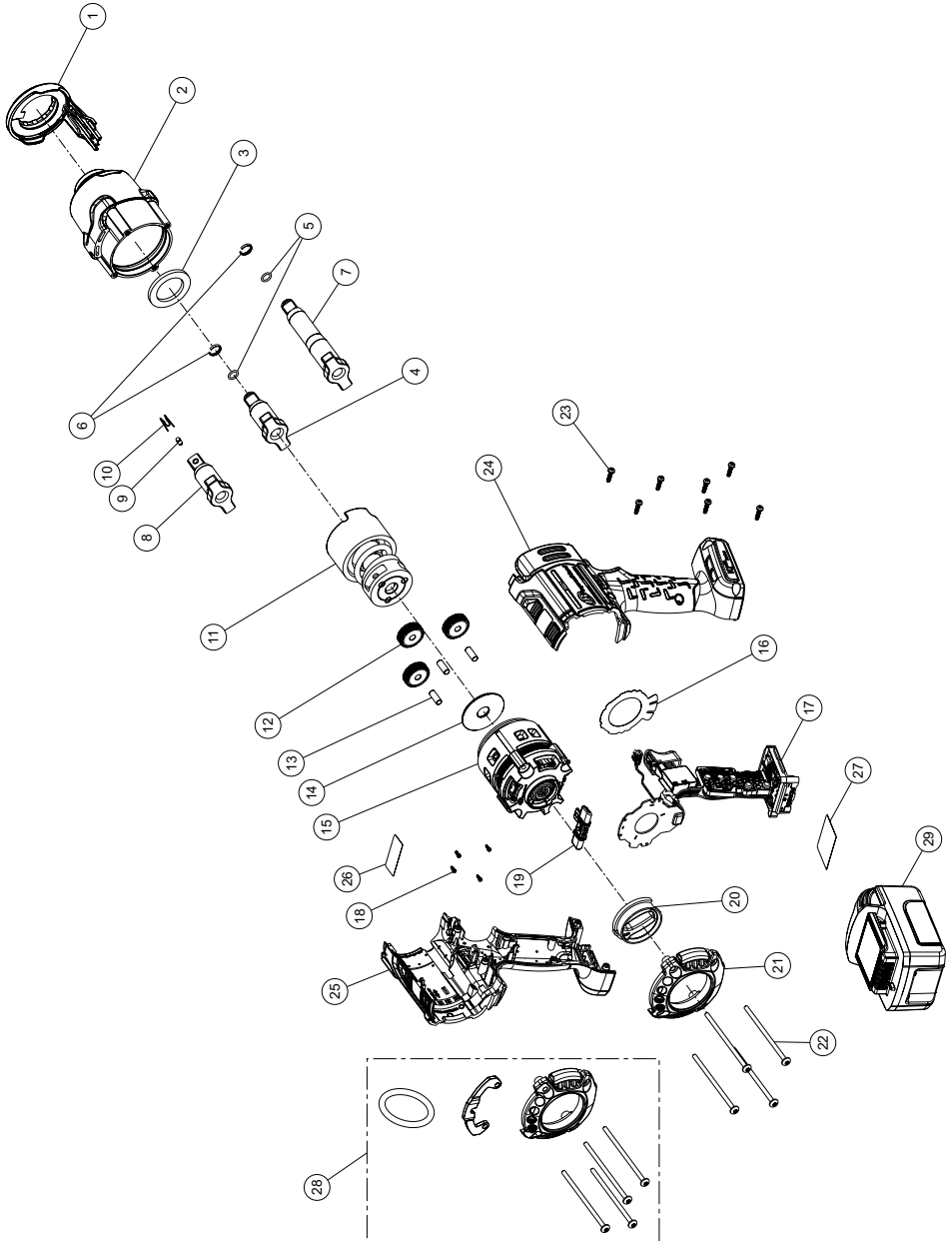


**W7002 Series: W7152, W7152P and W7252 Cordless Impact Wrench - Exploded View**



(Dwg. 47621726)



## W7002 Series: W7152, W7152P and W7252 Cordless Impact Wrench - Parts List

Item	Part Description	Part Number	(CCN)	Item	Part Description	Part Number	(CCN)
	LED Kit	W7152-KLED	(47631609001)	19	Directional Switch Kit	W7152-K75	(47631610001)
1	LED Assembly	---	---	20	Regulator Kit	W7152-K249	(47631608001)
	Hammer Case Kit	W7152-K727	(47631602001)	21	Backcap Kit	W7152-K40B	(47631613001)
1	LED Assembly	---	---		Fastener Kit	W7152-K105	(47631614001)
2	Hammer Case Assembly	---	---	18	Screw, Hall PCBA (4)	---	---
3	Washer	---	---	22	Screw, Hammercase (4)	---	---
	Anvil Kit for W7152	W7152-K626	47631603001	23	Screw, Housing (7)	---	---
4	1/2" Anvil, Retaining Ring	---	---		Housing Kit	W7152-K40	(47631612001)
5	O-Ring	---	---	24	Left Housing	---	---
6	Retaining Ring	---	---	25	Right Housing	---	---
	Anvil Kit, for W7252	W7252-K626	(47633585001)	26	Warning Label	---	---
7	1/2" Anvil, 2" Extended	---	---	23	Screw, Housing (7)	---	---
5	O-Ring	---	---		Label Kit	W7152-K99	(47631615001)
6	Retaining Ring	---	---	26	Warning Label	---	---
	Anvil Kit for W7152P	W7152P-K626	(47631604001)	27	Information Label	---	---
8	1/2" Anvil, Pin	---	---	28	Hanger Kit	W7152-K365B	(47632290001)
9	Retaining Pin	---	---		Backcap	---	---
10	Spring	---	---		Screw, Hammercase (2)	---	---
	Socket Retainer Kit for W7152, W7252	2125QTi-K425	(80107733)		Screw, Long Hammercase (2)	---	---
5	O-Ring	---	---		Ring	---	---
6	Retaining Ring	---	---		Bracket	---	---
	Socket Retainer Kit for W7152P	2125PTi-K425	(80107725)	29	Battery, BL2022	BL2022	(47515902001)
9	Retaining Pin	---	---	*	Battery Charger	BC1121	(47507879001)
10	Spring	---	---	*	Protective Tool Boot	W7152-BOOT	(47621732001)
11	Impact Mechanism Kit	W7152-K724	(47631605001)	*	Protective Tool Boot	W7152-BOOTX	(47621734001)
	Gear Kit	W7152-K37	(47631606001)	*	Protective Battery Boot	BL2010-BOOT	(47510964001)
12	Planet Gear (3)	---	---	*	Tool Bag	TB4	(47543666001)
13	Gear Pin (3)	---	---		Grease	---	---
14	Cam Thrust Washer	---	---		IR #105 (1 LB Can)	105 1 LB	(04279147)
15	Brushless Motor Kit	W7152-K54	(47631607001)		IR #105 (8 LB Can)	105 8 LB	(04264875)
16	Insulator Sheet Kit	W7152-K624	(47633589001)		IR #67 (1 LB Can)	67 1 LB	(03773009)
	Insulator sheet	---	---		IR #67 (8 LB Can)	67 8 LB	(03820008)
	Drive Kit	W7152-K93	(47631611001)	*	Grease Gun	R000A2-228	(03095015)
17	Drive Assembly	---	---	* Indicates not illustrated.			
27	Information Label	---	---				

### Parts and Maintenance

When tool life has expired, it is recommended that the tool be disassembled, degreased and parts separated by material for proper recycling.

Tool repair and maintenance should only be carried out by an authorized Service Center.

Refer all communications to the nearest **Ingersoll Rand** office or distributor.

### Related Documentation

Manuals can be downloaded from [ingersollrandproducts.com](http://ingersollrandproducts.com)

For additional information, refer to:

Product Safety Information Manual 04581146.

Product Information Manual 47621725001.

Declaration of Conformity 47589598001.

Hanger Install / Removal Instruction Card 47641906001 and 47642459001.

