



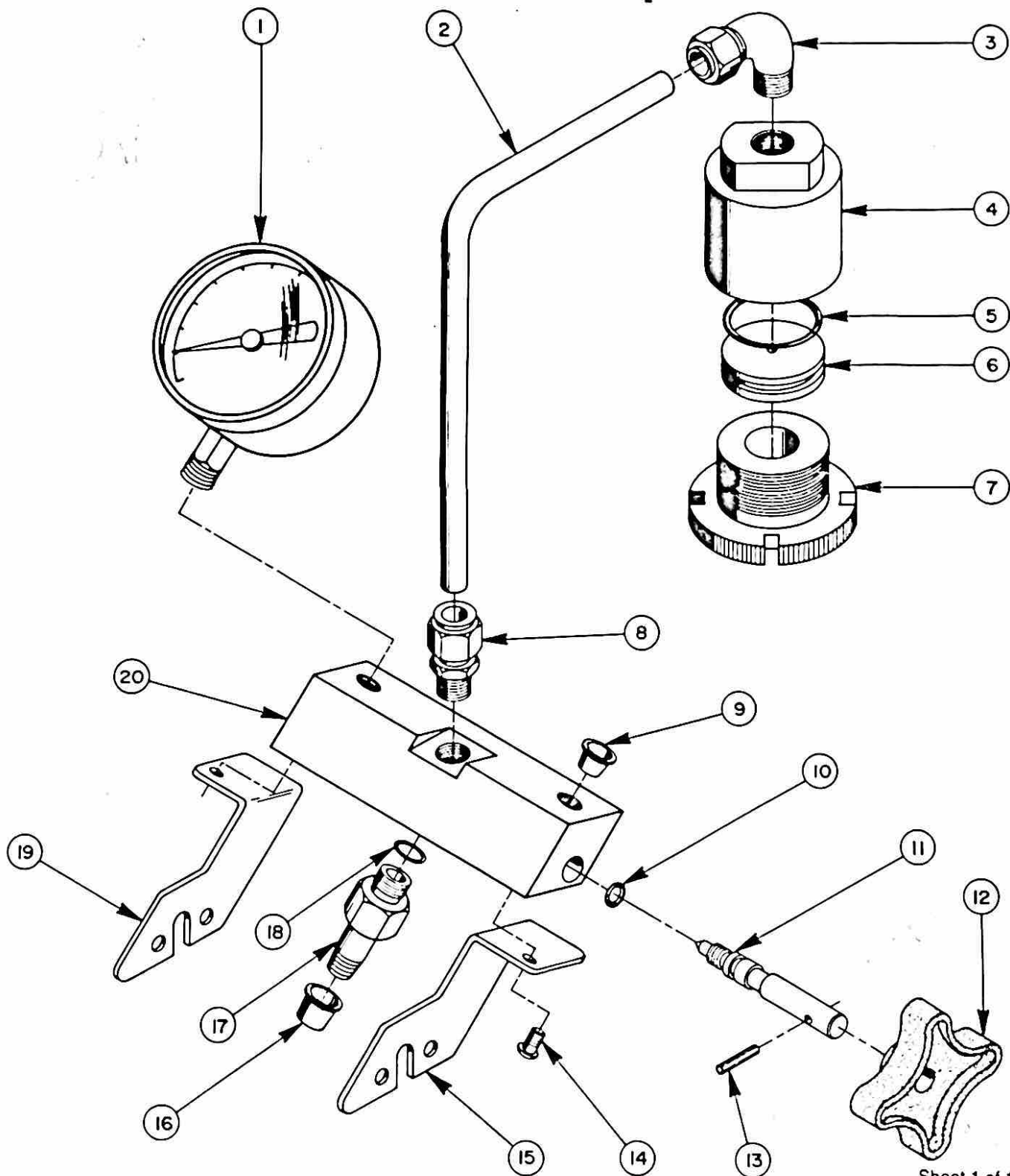
A division of SPX Corporation  
655 Eisenhower Drive  
Owatonna, MN 55060-0995 USA  
Phone: (507) 455-7000  
Tech. Serv.: (800) 533-6127  
Order Entry: (507) 455-1480  
International Sales: (507) 455-7223

Form No. 100431

Parts List  
for:

Y-915  
4203

## Nozzle Tester Adapter



Item No.	Part No.	No. Req'd	Description
1	15928	1	Pressure Gauge
2	36024	1	Tube
3	10666	1	Elbow Fitting
4	39845	1	Adapter
5	104485	1	"O" Ring
6	206166	1	Piston Ass'y
7	39846	1	Retainer
8	10661	1	Connector
9	14794	1	Plastic Plug
10	10266	2	"O" Ring
11	23271	2	Regulator Valve Stem
12	23272	2	Knob
13	10895	2	Roll Pin
14	10450	2	Rd. Hd. Screw
15	45979	1	Bracket (R.H.)
16	12545	1	Plastic Plug
17	201256	1	Fitting
18	10300	1	"O" Ring
19	45980	1	Bracket (L.H.)
20	50806	1	Valve Block

**PARTS INCLUDED BUT NOT SHOWN**

205471	1	Decal ( <i>Caution</i> )
10651	1	Cap Fitting ( <i>Use for capping nozzle rather pressure port fitting</i> )
39870	1	Fuel Injection Line Adapter
206168	1	Adapter Nozzle Set ( <i>Includes items 3, 4, 5, 6, &amp; 7</i> )

Refer to any operating instructions included with the product for detailed information about operation, testing, disassembly, reassembly, and preventive maintenance.

Items found in this parts list have been carefully tested and selected by OTC. Therefore: **Use only OTC replacement parts!**

Additional questions can be directed to the OTC Tech. Services Dept.



A division of SPX Corporation  
 655 Eisenhower Drive  
 Owatonna, MN 55060-0995 USA  
 Phone: (507) 455-7000  
 Tech. Serv.: (800) 533-6127  
 Order Entry: (507) 455-1480  
 International Sales: (507) 455-7223

Form No. 102414

Assembly & Operating Instructions  
 for:

Y-915  
 4203

## Nozzle Tester Adapter

### Safety Precautions



**WARNING:** To help prevent personal injury,

- Wear approved safety glasses at all times.
- Volatile liquids can be extremely flammable when vaporized. Avoid any conditions (sparks, open flames, lit cigarettes, etc.) that could ignite the fluid used during the test procedure.
- Always use the tester in a well ventilated area.
- When a nozzle is being tested or is in operation, keep clear of the spraying nozzle. The liquid spray leaves the nozzle tip with enough force to penetrate the skin. Place the nozzle tip in a transparent receptacle to contain the spray, and make sure all connections in the system are secure. Fluid leaves pressurized fittings with enough force to penetrate the skin and cause serious personal injury.
- Do not unscrew valve knobs more than one turn during a nozzle test. Pressurized fluid could escape and cause personal injury.

### Removing the Existing Gauge Assembly

1. See Figure 1. Remove the four screws that hold the gauge protector to the tester head. Remove the gauge protector. **NOTE:** You don't have to remove the shut-off valve, gauge protector valve, or isolator valve because the gauge protector has slots in the valve areas. Once the screws have been removed, the gauge protector can be pulled upward off the valves.
2. Remove the high pressure gauge from tester.

### Preparing the Nozzle Tester Adapter

3. See Figure 2. Remove the two screws holding the brackets to the base of the adapter block. Remove the brackets.
4. Thread the high pressure gauge (that was removed in Step 2) into the right gauge port on top of the adapter block. **IMPORTANT:** Seal hydraulic connections with a high-quality, non-hardening thread sealant. Teflon tape can also be used if only one layer of tape is used. Start the tape at least two threads away from the end of the fitting. Apply the tape carefully to prevent it from being pinched by the fitting and broken off inside the pipe end. Loose pieces of tape could travel through the system and obstruct the flow of oil or cause jamming of precision-fit parts.

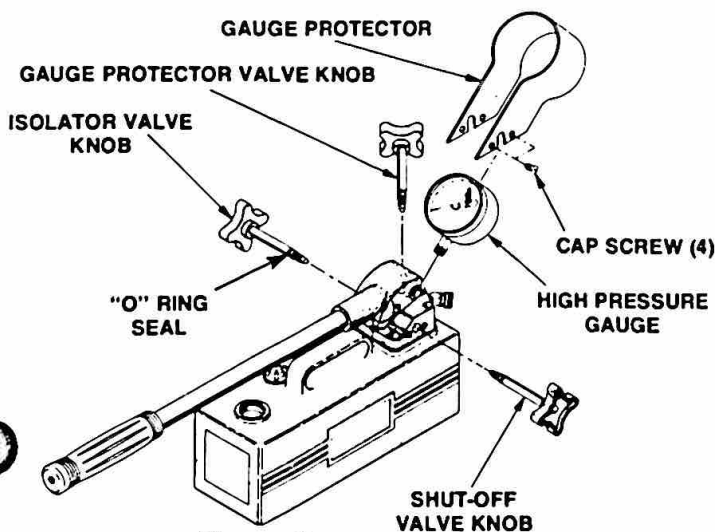


Figure 1

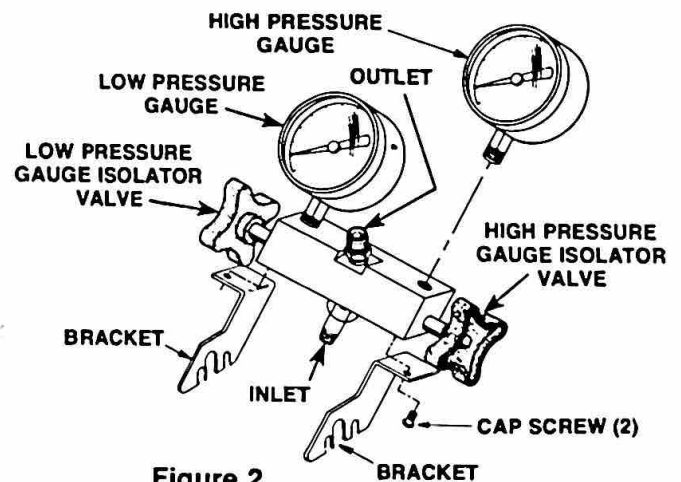


Figure 2

**Installing the Nozzle Tester Adapter**

5. Thread the inlet fitting at the base of the adapter block into the tester head gauge port until the adapter is positioned on the tester as shown in Figure 3.
6. Fasten the two brackets to the adapter block and tester head using the screws removed in Steps 1 & 3.
7. Securely install the cap plug on the 45° outlet elbow at the rear of the tester head.
8. Slip the connector on the adapter tube. Place the sleeve inside the connector on the tube as shown in Figure 4. Install the tube assembly into the center port on top of the adapter block. See Figure 5.

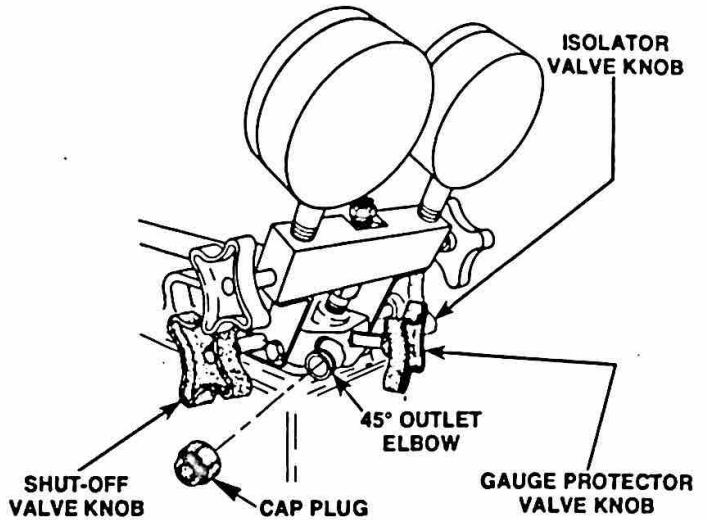


Figure 3

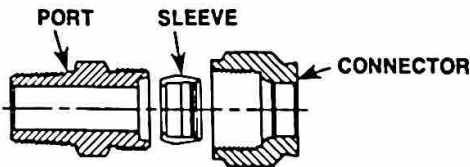


Figure 4

**Using the Nozzle Tester Adapter**

**IMPORTANT:** To help prevent equipment damage, open the gauge protector valve knob one turn (from the closed position) before any test.

**Testing Capsule Nozzles:**

1. Load the capsule nozzle into the adapter as shown in Figure 6. Firmly fasten the adapter to the adapter tube.
2. Use the test procedure for the type of capsule nozzle being tested.

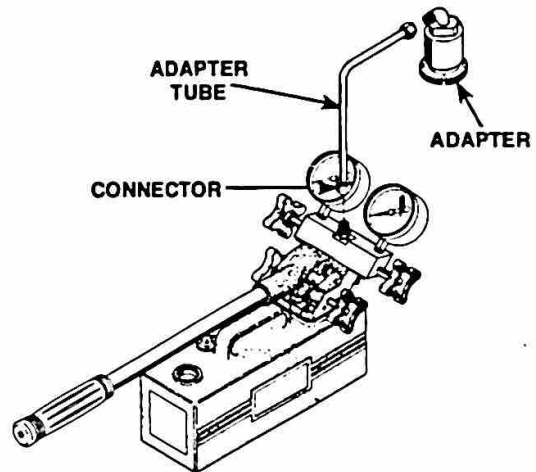


Figure 5

**Testing Pencil Nozzles:**

1. Firmly attach the pencil nozzle to the correct adapter for the application. Firmly fasten the adapter to the adapter tube. See Figure 7.
2. Use the test procedure for the type of pencil nozzle being tested.

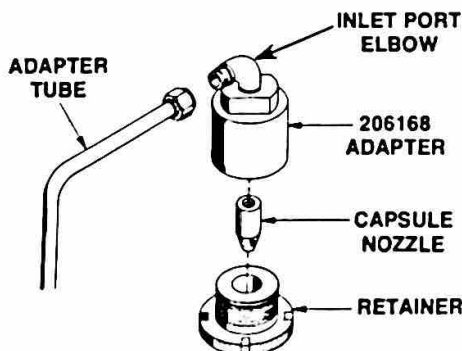


Figure 6

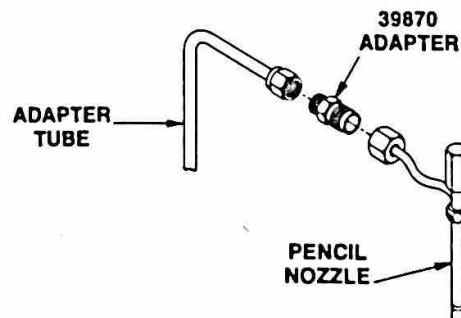


Figure 7