

MAKE LIGHT WORK OF HEAVY EV BATTERIES

Future proof your operations with this versatile, patent-pending air-hydraulic lifting table.

Built by the maker of the most trusted lifts in the industry, Rotary's LT35A Lift Table is designed to handle EV batteries and other heavy vehicle components with ease!



To compensate for floor slope, platform level adjustments align tabletop with batteries and car components without caster movement.



SCAN TO VIEW
PRODUCT VIDEO



EXTRA LONG 78" PENDANT CORD

- Allows for ample operator movement
- Provides technician full view of work area to confirm load is correctly on the platform

SHOP AIR OPERATED HANDHELD
PENDANT CONTROLS

Table position alignments can be adjusted while under load with no need to remove battery, parts, or tools from platform.

1 SIDE TO SIDE TILT ALIGNMENT



Use a 14mm or 9/16" socket or wrench on tilt mechanism located on the right side of the lift table to raise or lower platform +/-3°.

2 FORE & AFT TILT ADJUSTMENT

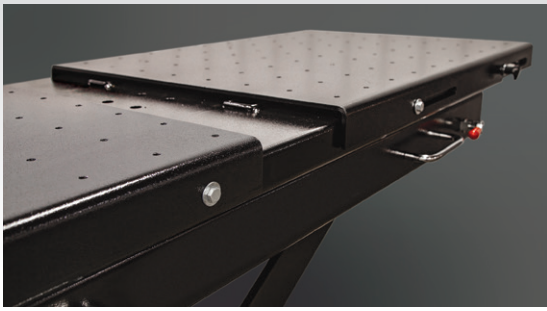


Adjust the tabletop with the object being removed or installed +3°/-1°. Tighten to raise the side with the tilt mechanism and loosen to lower it by using a 14mm or 9/16" socket or wrench.

3 FINE TUNING ADJUSTMENT



For fine platform positioning, release the four red-handled swivel locks on both sides of the lift table allowing the tabletop to move freely. Re-engage locks when fine positioning is not needed.



4 VERSATILE SPLIT SLIDING TOP

- Extend platform surface up to an additional 8" without having to move the entire table for multi-positioning of larger loads
- Includes threaded 10mm tabletop holes for attaching mounts and brackets for a broader array of service functions



5 SHOP AIR RELEASED MECHANICAL LOCKS

- Safety measure adds locking security versus relying solely on the hydraulic system itself
- 10 locking positions at every 2-3/4", with the first lock is at a 34" table top height

Locks shown in the raised position during lowering of table
Compliant with Standards for Garage Equipment
- adds additional support and safety guidelines



360° CASTERS



- Provides table adjustments in all directions and easier movement across longer distances
- Rotational locks at all four corners
- 8" low friction casters provide ample clearance between floor and platform base

SPECIFICATIONS LT35A000YBK	
Lift Table Capacity	3,500 lbs.
Maximum Rise Height	70 1/8"
Collapsed Height	29"
Overall Width	35 1/2"
Overall Length	102 1/8"
Deck Width	31 7/8"
Deck Length	Closed: 73 3/8" Open: 81 3/8"
First Locking Positions*	34" Table Height
Air Requirements	90-120 PSI 6.2-8.3 bar
Clearance	6 3/4"
Overall Weight	1,375 lbs.

* 10 locking positions with 2 3/4" horizontal travel between each
Standard color is black.

LT35A Rotary
AIR-HYDRAULIC LIFTING TABLE
3,500 lbs. CAPACITY

GAME CHANGING, PATENT-PENDING ACCESSORY!

RT30 SCISSOR LIFT REPAIR TABLE 3,000 lbs. CAPACITY



Use numerous RT30 repair tables with a single LT35A lift table and reduce the need for multiple lift tables.



SCAN TO VIEW
PRODUCT VIDEO



CREATE MULTIPLE REPAIR STATIONS! PAIR THE RT30 REPAIR TABLE WITH THE LT35A SCISSOR LIFT

SHOWN ABOVE: RT30 repair table mounted to 3,500 lbs. capacity LT35A scissor lift table



For a complete guide to our product offering or to contact your local distributor, visit us at www.rotarylif.com today.

If you need assistance or have questions, we're here to help

800.445.5438 / Sales: insidesales@vsdover.com / Support: technicalsupport@rotarylif.com



ROTARY

2700 Lanier Drive | Madison, IN 47250, U.S.A.

Lit# Rotary LT35 LIFT TABLE Cutsheet.2024.01

©2024 VEHICLE SERVICE GROUP®

All Rights Reserved. Unless otherwise indicated, ROTARY, VEHICLE SERVICE GROUP®, DOVER and all other trademarks are property of Dover Corporation and its affiliates. Printed in U.S.A.

Product specifications, part numbers, images and component descriptions are subject to change without notice or liability.