

COLUMN EXTENSIONS

19) Hoses, cables, and limit switch cord should be routed as shown in Fig. 5.

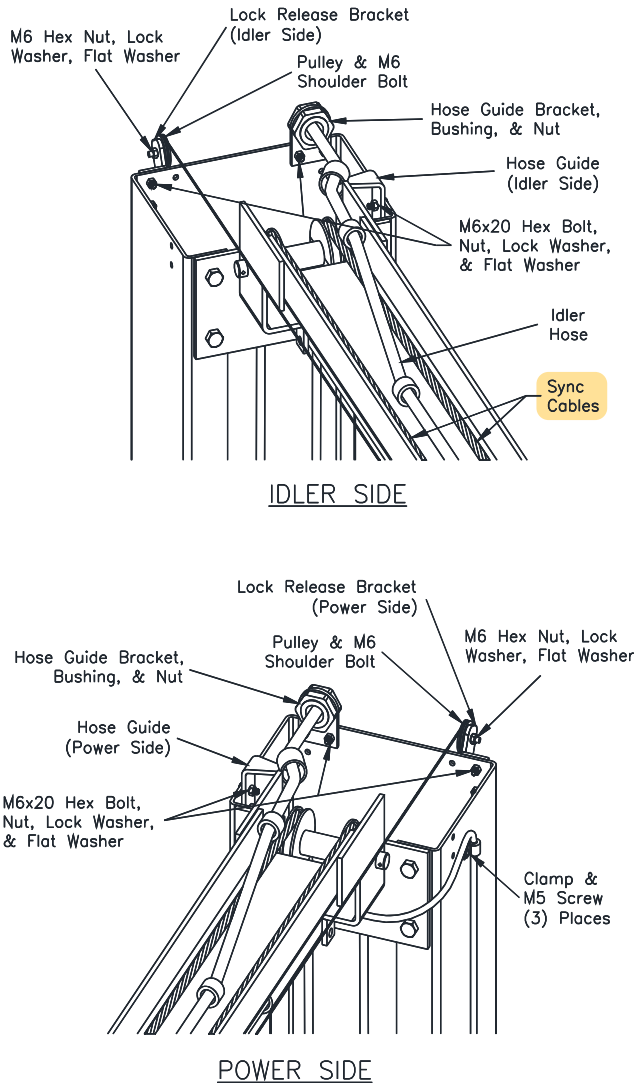


Fig. 5 – Column Extensions

POWER UNIT & HYDRAULIC LINES

- 20) Mount Power Unit to power column as shown in Fig. 6 using (4) M8 hex bolts and nuts.
- 21) Attach hydraulic elbow fitting threading the O-Ring end into the power unit.
- 22) **IMPORTANT – To ensure proper hose fitting seal without damage to the fitting follow this procedure for each hose connection:** Screw flared fitting on finger tight. Rotate flared fitting 1 ½ flats or 90 degrees. Back the flared fitting off one full turn and repeat.
- 23) Thread power unit hose (short) to elbow on power unit.

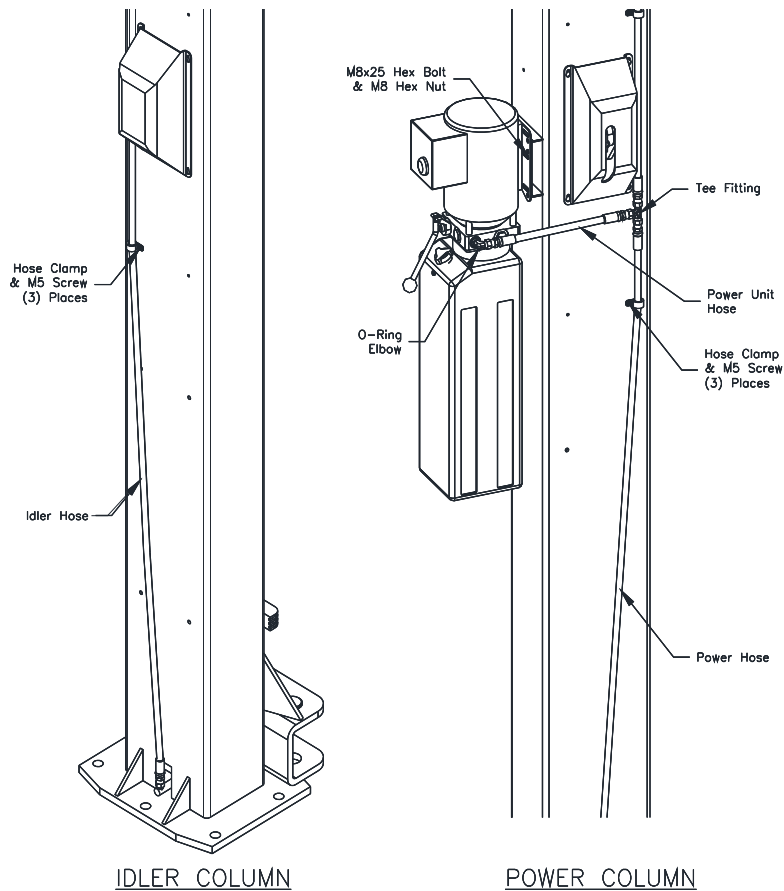
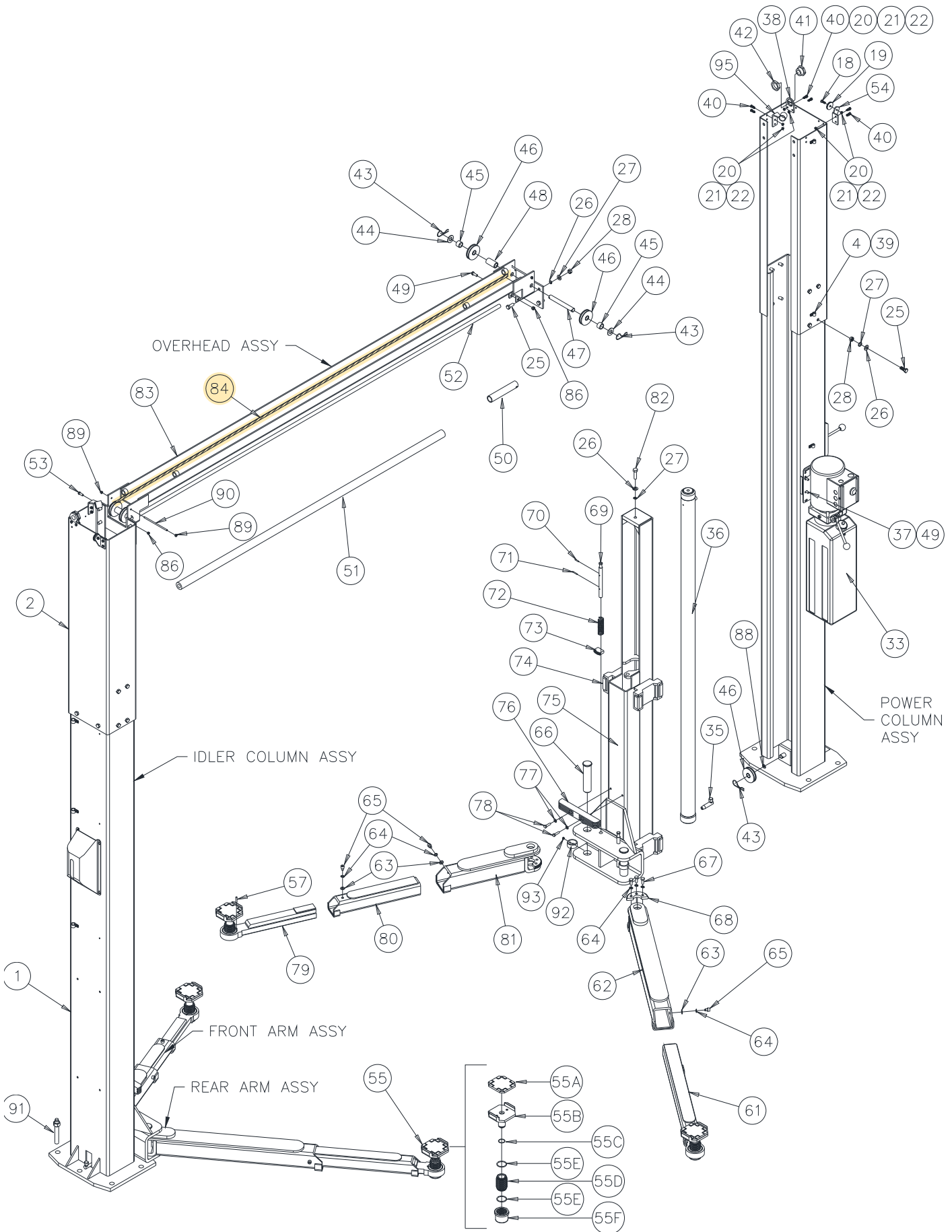


Fig. 6 – Hose Routing

- 24) Beginning on the idler side, attach the idler extension hose to the cylinder elbow fitting (This hose has a male fitting on one end and is removed for reduced height installations). Continue with the idler hose (long) up the backside of the column and thru the plastic guide at the top of the extension. Continue across the overhead through each of the guides as shown in Fig. 5 and down the backside of the power column.
- 25) Route the power hose from the cylinder elbow fitting to the union tee provided. Connect idler hose and power unit hose to union tee as shown in Fig. 5.
- 26) **BE CERTAIN ALL FITTINGS AND CONNECTIONS ARE TIGHT. IT IS THE INSTALLERS RESPONSIBILITY TO ENSURE SYSTEM IS LEAK-FREE.** Fill the Power Unit with three gallons of clean 10wt anti-foam anti-rust hydraulic oil or Dexron III ATF. **Do NOT USE OILS WITH DETERGENTS.**
- 27) Use hose clamps and M5 Screws to secure hydraulic hoses and limit switch cord as shown in Figures 5 & 6.

Model E10
Installation, Operation and Maintenance



Model E10
Installation, Operation and Maintenance

Item #	Part #	Qty	Description	Item #	Part #	Qty.	Description
1	JSJ5-02-01-00CH	1	Power Column Weld	50	12045	1	Limit Switch
	JSJ5-02-01-00fCH	1	Idler Column Weld	51	JSJ5-03-03	1	Shutoff Bar Cushion
2	JSJ5-02-02-01	2	Standard Ht. Extension Forming	52	JSJ5-03-02CH	1	Shutoff Bar
	JSJ5-02-02-01H		2' Extended Ht. Extension Forming	53	X10-063	1	Bolt M8
3	JSJ5-02-14	1	Power Lock Cover	54	JSJ4-02-11-00F	1	Pulley Bracket, Power
	JSJ5-02-14F	1	Idler Lock Cover		JSJ4-02-11-00	1	Pulley Bracket, Idler
4	X10-065	17	Screw M5 x10	55	B2270	4	Foot Pad Assembly
5	JSJ3-01-02-2-9	1	Lock Release Knob	55A	A1104-H	4	Rubber Insert
6	JSJ5-02-06	1	Lock Release Stud	55B	A1101-1H	4	Foot Pad Weld
7	X10-019	1	Nut M10	55C	B17256	4	2x30 Retaining Ring
8	X10-020	4	"C" Ring 20	55D	B2261	4	Threaded Sleeve
9	JSJ5-02-12	2	Lock Release Wire Pin	55E	B17257	8	3x45 Retaining Ring
10	JSJ5-02-13	2	Lock Release Spring 1	55F	B17276-1	4	Threaded Insert
11	JSJ5-02-07	2	Lock Release Spring 2	57	B2211	4	Roll Pin, ø6x30
12	JSJ5-02-04	2	Lock Release Shaft	61	JSJ5090200CH	2	Rear Male Arm
13	JSJ5-02-10	2	Lock Release Cam	62	JSJ5B090100B	2	Rear Female Arm
14	X10-026	2	Bolt M6	63	X10-073	6	Washer 10mm
15	X10-027	2	Spring Pin 6 x 35	64	X10-074	18	Spring Washer 10mm
16	JSJ5-02-03	2	Lock Pawl	65	JSJ4-09-08	6	Screw M10
17	X10-029	2	Washer	66	JSJ5-11	4	Arm Pin
18	JSJ4-02-08	4	Pulley Axle	67	X10-077	12	Screw M10 x 25
19	JSJ4-02-09	4	Pulley	68	JSJ5-09-07	4	Inner Gear
20	X10-032	16	Washer 6mm	69	JSJ5-13	4	Arm Restraint Pin
21	X10-033	16	Spring Washer 6mm	70	X10-080	4	Spring Pin 4 x 24
22	X10-034	17	Nut M6	71	X10-081	4	Spring Pin 4 x 30
23	JSJ5-06-01	1	Bolt (Cable Clamp)	72	JSJ4-14	4	Arm Restraint Spring
24	JSJ5-06-02	1	Sleeve	73	JSJ4-12	4	Outer Gear
25	X10-037	28	Bolt M12 x 30	74	JSJ5-08-15	16	Slide Block
26	X10-038	28	Washer 12mm	75	JSJ5-08-00CH	2	Carriage
27	X10-039	28	Spring Washer 12mm	76	JSJ4-05CH	2	Door Guard
28	X10-040	28	Nut M12	77	X10-087	4	Washer 8mm
29	JSJ5-18CH	1	Idler Column Hose	78	X10-088	4	Bolt M8 x 30
30	JSJ4-15	1	Union Tee	79	JSJ5B100300CH	2	Front Male Arm
31	JSJ5-17	1	Power Unit Hose	80	JSJ5B100200	2	Front Intermediate Arm
32	JSJ5-19	1	O-Ring Elbow	81	JSJ5B100100	2	Front Female Arm
33	AB-9367-DLH	1	Power Unit	82	X10-092	2	Bolt M12 x 45
	AD-9367		Power Unit, 3Phase	83	JSJ5-03-01-00CH	1	Overhead Weld
34	JSJ4-16	1	Power Column Hose	84	JSJ5-04-00CH	2	Sync. Cable (Std. Ht)
35	JSJ6-19	2	Elbow, O-Ring		JSJ5-04-00CHH		Sync. Cable (2Ft Ext Ht)
36	JSJ5-07-00CHA	2	Cylinder, O-Ring	85	X10-095	8	Nut M16
37	X10-048	4	Nut M8	86	X10-096	2	Lock Nut M10
38	JSJ4-02-02-02	2	Hose Guide Bracket	87	JSJ5-06CH	1	Lock Release Cable (Std. Ht)
39	1-03382A	9	Hose Clamp		JSJ5-06CHH		Lock Release Cable (2Ft Ext Ht)
40	X10-051	16	Bolt M6 x 20	88	X10-099	4	Washer 20mm
41	JSJ4-02-17	4	Hose Guide	89	B31061	4	M6 Lock Nut
42	JSJ4-02-18	2	Hose Guide Nut	90	JSJ5-03-07CH	2	Cable Trapping Rod
43	GJY12-3	6	Hair Pin Cotter	91	31058	10	¾"x5- ½" Concrete Anchor
44	X10-055	4	Washer	92	JSJ5-22CH	4	40.5 x 48 x 20 Lg. Collar
45	JSJ4-03-06	4	Spacer Sleeve	93	JSJ5-23CH	4	M8 x 8 Set Screw Cup Point
46	JSJ3-03-02	6	Synch. Sheave	94	JSJ5-21H	1	Extension Hose (2Ft.Ext. Height)
47	JSJ4-03-03	2	Axle	95	JSJ5-02-03-00Q	1	Power Side Hose Guide
48	JSJ4-03-05	2	Middle Spacer Sleeve		JSJ5-02-03-00FQ	1	Idler Side Hose Guide
49	X10-060	2	Bolt M8 x 25				

IMPORTANT

Replace all worn, damaged, or broken parts with parts approved by **Challenger Lifts, Inc.** or with parts meeting **Challenger Lifts Inc.** specifications. Contact your local Challenger Lifts parts distributor for pricing and availability. Call Challenger Lifts at **(502) 625-0700** for the distributor in your area.