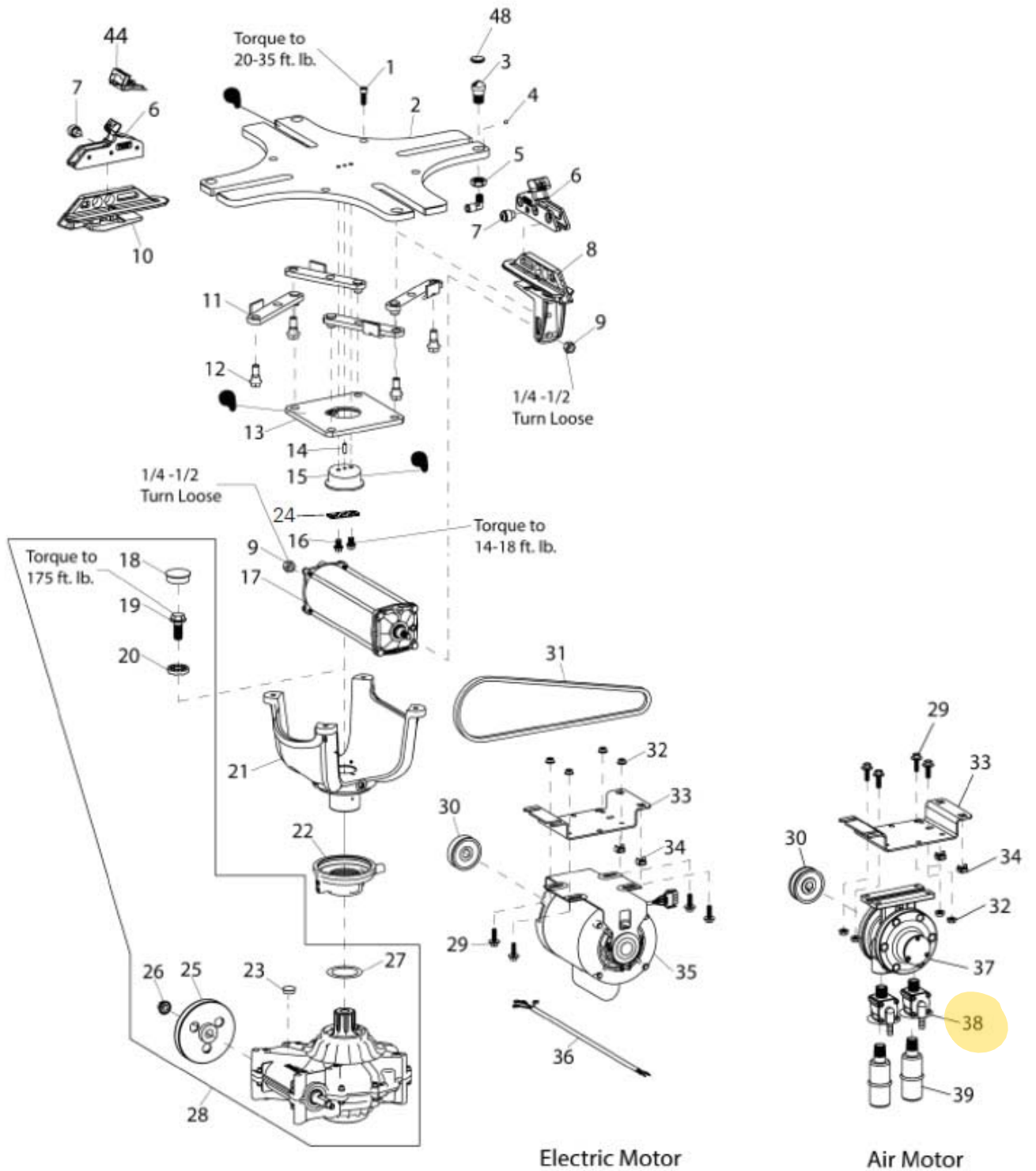


Table Top and Shaft Housing Assembly

Item	Part No.	Description	Item	Part No.	Description
1	8181929	3/8-16 x 1", Gr.8 Skt. Hd. Cap Scr.	26	8140567	1/2-13, Hex. Whiz-lock Nut
2	8181704	Table Top Plate	27	8183156	ø2" X ø2 3/4" x .010 Washer
6	8182247	Adjustable Rim Clamp	28	85608497	Transmission Kit
7	8182250	Adj. Clamp Plunger/Spring Assy.	29	8120325	5/16-18 x 1 Ser. Wash.Hd.Scr., Gr.5
8	8184924	Carrier/Cover - Cylinder End	30	8184674	Motor Pulley
9	8101039	1/2" Lock Nut, Gr.5	31	85608496	Motor V-Belt, 4L390
10	8184925	Carrier/Cover - Clamp Adj.	32	8182178	5/16-18, Hex. Whiz Lock Nut
11	85610388	Pivot Link W/C	33	85609921	Motor Bracket
12	8182279	Adj. Clamp Link Bolt	34	8143044	Tinnerman Sq. Captive Nut 3/8-16
13	8181731	Table Top Pivot Plate	35	8184691	Motor, Electric 115V, 60 Hz, 1 Phase
14	8183476	ø1/4" x 3/4" Roll Pin		8182621	Motor, Electric 220/240V, 50 Hz, 1 Phase
15	8181733	Pivot Block		85000591	Motor, Electric 220V, 60 Hz, 1 Phase
16	85610716	Screw-HHCS, 5/16-18 x 5/8, GR.5		8184562	Motor Cable Assy, 4-wire w/plug, 115V, 60 Hz & 220V, 50 Hz
†17	8182613	Table Top Cylinder Assembly		85000632	Motor Cable Assy, 220V, 60 Hz
18	8182627	1-5/8" Dia. Cap Plug	36	8181190	Air Motor, Gast. 6AM
19	8181742	16MM x 40mm Hex Head Bolt Gr.10.9		85606398	Exhaust Valve
20	8182979	ø16mm Molded Washer	37	8181206	1/2" NPT Muffler
21	8181990	Spider Assembly	**44	8183604	Bootie Kit, Rim Clamp, Pkg of 10
22	8182619	Rotary Coupling Assembly			
23	85610108	Cap Plug			
24	85610717	Retainer Bracket			
25	85607708	Transmission Pulley (4-hole)			

†Cylinder Assemblies (see page 17)

**Accessory Item



● APPLY GREASE TO THESE LOCATIONS