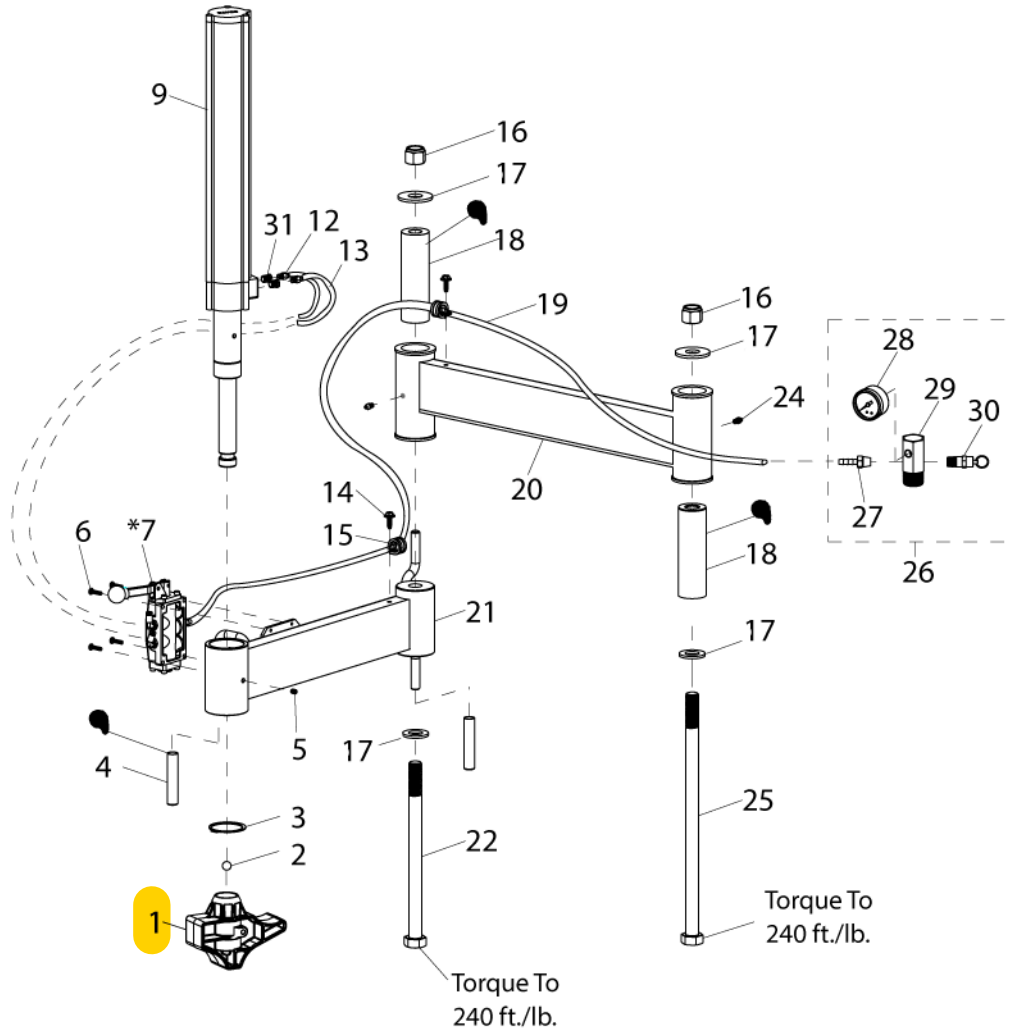


Robo-Arm® Helper Device Assembly



 APPLY GREASE TO THESE LOCATIONS

| Item | Part No. | Description |
|------|-------------|-------------------------------------|
| 1 | 8500916701 | Plastic Foot Hold Down |
| 2 | 8301017 | ø1/2" Steel Ball |
| 3 | 8183637 | ø2 Ext. Retaining Ring |
| 4 | 70002301 | 1/2" Rubber Hand Grip |
| 5 | 85610656 | 1/4-20 x 5/16 LG BHCS |
| 6 | 8182001 | Screw - 10-24 x 3/4 Lg. SHCS |
| *7 | see p.22 | Robo Arm Valve |
| 8 | 905563 | Pin-Roll, 1/4X1-1/2 |
| 9 | 8560888401 | Cylinder Assembly 2.5" Dia. |
| 12 | 8181996 | 1/4 NPT x 1/8 Tube St. Fitting |
| 13 | ** | 1/8 x 6" Plastic Tube |
| 14 | 8106301 | 1/4-20 x 3/4" Soc Hd HWHST Screw |
| 15 | 8182044 | Neoprene Cushion Clamp |
| 16 | 8182016 | 3/4"-10 Nylon Insert Lock Nut, Gr.5 |
| 17 | 8100994 | 3/4" x 2" OD Flat Washer |
| 18 | 8181038 | Swing Arm Pivot Pin |
| 19 | ** 1/4, 58" | Black Rubber Hose |
| 20 | 81849043 | Rear Arm Weldment (Red) |
| 21 | 8561134903 | Front Arm Weldment (Red) |
| 22 | 8183703 | 3/4-10 x 10-1/2" HHCS, Gr5 |

| Item | Part No. | Description |
|------|-------------|-------------------------------------|
| 24 | *** 8184226 | 1/4-28 Grease Fitting If Applicable |
| 25 | 8183635 | 3/4-10 x 14-1/2" HHCS, Gr.5 |
| 26 | 8184059 | Manifold Assembly |
| 27 | 8000378 | 1/4" Brass St. Fitting |
| 28 | 8108968 | Air Gauge |
| 29 | 8183434 | Manifold/Gauge |
| 30 | 8182599 | Safety Valve |
| 31 | 8109481 | 1/4 NPT x 1/8 NPT RDCR Fitting |
| 32 | 8183636 | Spacer, .781 ID x 2.75 OD x 1.5 |

* Valve (available only as individual components, see page 22)

**Hose Reels

*** Post April 2021 Maintenance Free Version

Hose Reels

| LENGTH | PART NO. | DESCRIPTION |
|---------|----------|-------------------------------------|
| 50-ft. | 85000375 | 1/4" ID x 1/2" OD Black Rubber Hose |
| 50-ft. | 85000376 | 1/8" OD x 0.25 Plastic Tube |
| 100-ft. | 85609142 | 3/8" OD x 0.05 Plastic Tube |