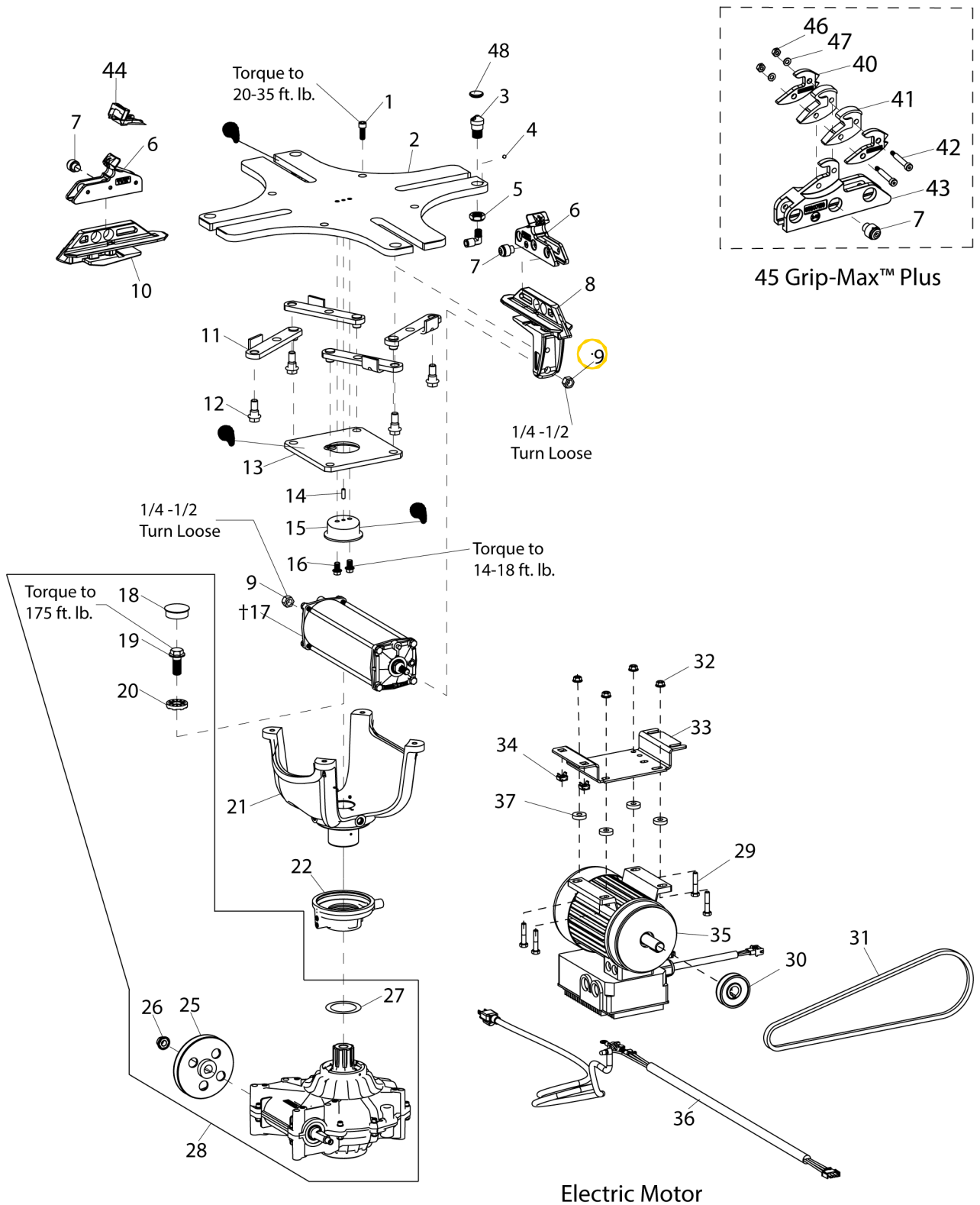


## Table Top and Shaft Housing Assembly

Item	Part No.	Description	Item	Part No.	Description
1	8181929	3/8-16 x 1" Gr.8 Skt. Hd. Cap Scr.	31	85608496	Motor V-Belt, 4L390
2	8181704	Table Top Plate	32	85607346	M8 Whiz Lock Hex Nut
3	8182024	Inflation Nozzle	33	85609921	Motor Mounting Bracket
4	8182025	1/4" Steel Ball	34	8143044	Tinnerman Sq. Captive Nut 3/8-16
5	8182083	3/4" Jam Nut	35	85609751	Motor, Electric 115V, 60Hz, 2-speed
6	8184126EX	Adjustable Rim Clamp	36	85609960	Motor Cable Assy, CSA, 2-speed
7	8182250	Adj. Clamp Plunger/Spring Assy.	37	8120369	1/4 x 3/8 x 1" Rubber Washer
8	8182248	Carrier/Cover - Cylinder End	40	85607160	3-position Laminated Clamp Cover Plus Points
9	8101039	1/2" Lock Nut, Gr.5		85607429	3-position Laminated Clamp Cover Plus w/o Points
10	8182249	Carrier/Cover - Clamp Adj.	41	85607161	Laminated Clamp Plus Grip
11	8181734	Pivot Link W/C	42	85000610	1/4 x 1-1/4 x #10-24 Shoulder Screw
12	8182279	Adj. Clamp Link Bolt	43	85607159	3-position Laminated Clamp Plus
13	8181731	Table Top Pivot Plate	**44	8183604	Bootie Kit, Rim Clamp, Pkg of 10
14	8183476	ø1/4" x 3/4" Roll Pin	**45	85607787	Grip Max Plus™, Laminated Clamps, Pkg. of 4
15	8181733	Pivot Block		85607786	Grip Max Plus™, Laminated Clamps (External Clamp Only), Pkg. of 4
16	8183452	5/16-18 x 5/8" Flange Whiz-lock Scr.	46	8182682	#10-24 Rvsble Hex Lk Nut
†17	8182613	Table Top Cylinder Assembly	47	8301805	#10 Washer
18	8182627	1-5/8" Dia. Cap Plug	48	85609097	Hole Plug (Table w/o Inflation Jets)
19	8181742	16MM x 40mm Hex Head Bolt Gr.10.9			
20	8182979	ø16mm Molded Washer			
21	8181990	Spider Assembly			
22	8182619	Rotary Coupling Assembly			
25	85607708	Transmission Pulley (4-hole)			
26	8140567	1/2-13, Hex. Whiz-lock Nut			
27	8183156	ø2" X ø2 3/4" x .010 Washer			
28	85608497	Transmission Kit			
29	85609311	M8 x 1.25 x 40mm HHCS Bolt			
30	85609750	Motor Pulley			

†Cylinder Assemblies (see page 14)

\*\*Accessory Item



 APPLY GREASE TO THESE LOCATIONS