



READ INSTRUCTIONS THOROUGHLY BEFORE OPERATING



Rev. June 12, 2020

800.223.4540

3451 S. 40th Street
Phoenix, AZ 85040
602.437.5020

www.BuyTsi.com
info@BuyTsi.com
Fax 602.437.5025

GENERAL INFORMATION

The S-1400M Universal Truck Frame Lift is a fast action, longer reach air lift jack that is specially engineered to meet the requirements of heavy-duty equipment shops. The 48" between the cylinder and the movable lift pads let you reach under the vehicle and lift by the frame - the safest way! Anywhere an air hose will reach, you have low-cost lifting power with one-man portability. Two large center wheels allow the S-1400M to maneuver for easy positioning by one person. Trigger the dual action valve to raise or lower up to 7 tons.

Maximum lift height 45" with extended pads (30" lift travel)

Minimum height 11.5"

Max width between saddles is 46"



WARNING!

Compressed air is dangerous – always be aware of the situation

Lifting Vehicles with jacks can be dangerous if proper caution is not observed

Make sure the lift is making contact on solid frame members so it will not slip

Make sure lift base is setting firmly on a stable foundation so no sliding occurs

Always use proper jack stands to secure vehicle after it is lifted

OPERATING INSTRUCTIONS

Connect an air line (up to 200 psi) to the rear of cylinder. Apply air pressure by squeezing the valve to cause cylinder to raise the lift. Squeezing on the opposite side will vent air from the cylinder to lower the lift.

Position the lift to contact the frame and make sure the lift is on a solid and stable surface. Add air to the cylinder to raise the lift. Watch both the lift and vehicle for any slippage or unsafe conditions. Stop raising the vehicle immediately if anything shifts. A safety pin and handle mechanism will stop the cylinder from lowering when pin is engaged into slot in piston rod. Raise vehicle to needed height and make sure the pin is engaged. Vent air slowly from the cylinder for pin to rest on the slot and hold vehicle. Stabilize the vehicle with additional jack stands and wheel stops.

To lower the lift, apply air pressure to cylinder to free the pin from the safety hole by slightly raising the vehicle. After pin is disengaged, push in on the lock handle to release safety pin. Continue to hold handle while lift is lowered. Release air from the valve slowly and allow lift to be lowered. Monitor both the vehicle and lift for any shifting that may be unsafe.

MAINTENANCE

Regular Maintenance

1. Apply grease with a brush to lock pin to maintain a free action
2. Apply grease to zerks on rear lift pivots near cylinder and on center pivot shaft every few days
3. Apply grease to zerks on 6 x 3 wheels and the center 8 x 2 wheels every 2 weeks
4. Using a brush, apply grease to 5" square piston rod (all four sides) every 30 days
5. Apply lube oil to four oil holes on arm pivot every 30 days
6. Apply SAE 10 oil to all working parts on stop parts, link arms and wheels every 30 days
7. Every 3 months remove air inlet elbow at top of cylinder and inject a cup of SAE 30 motor oil, this will lubricate all internal working parts in the cylinder.

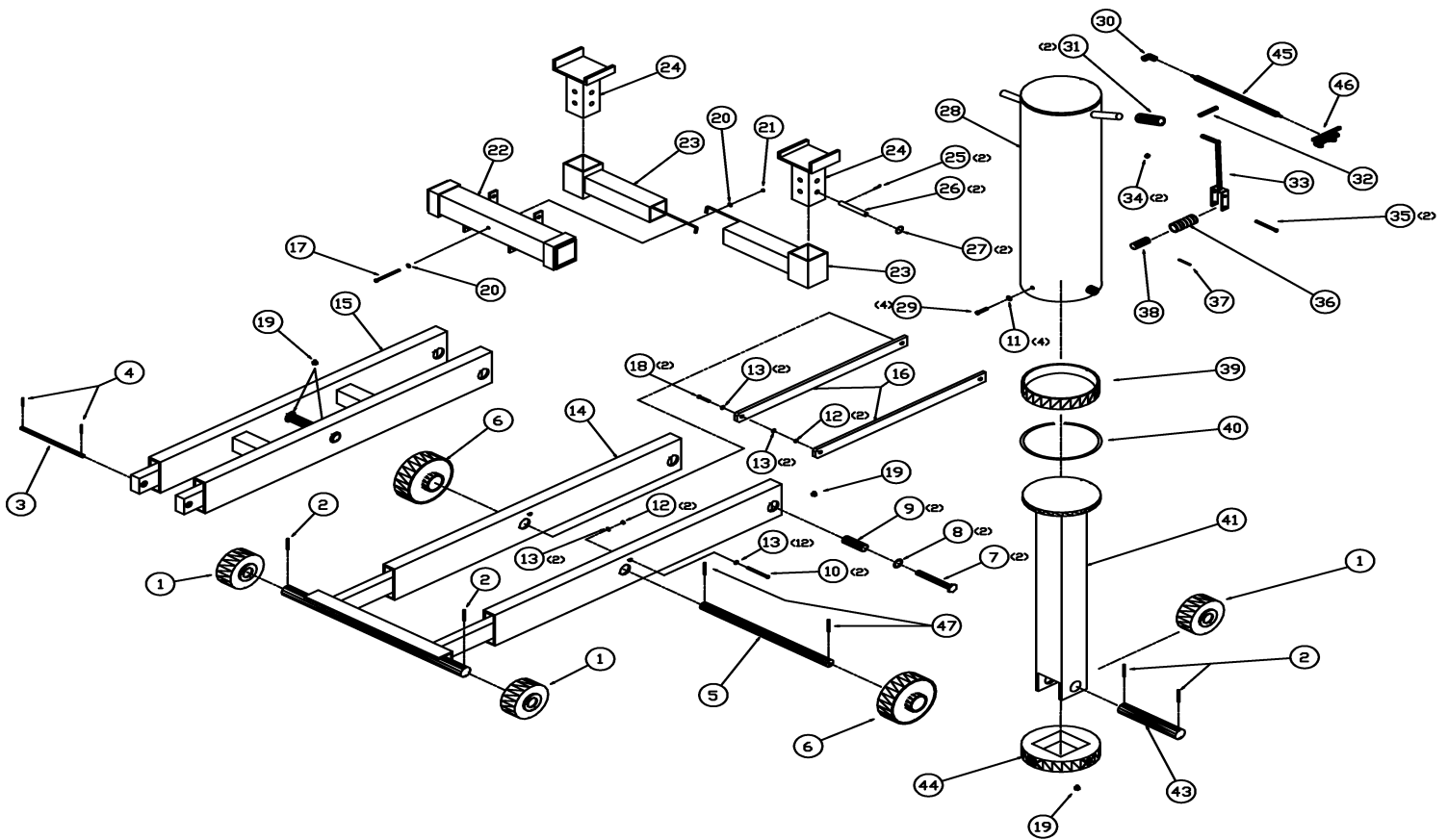
Six-Month Maintenance'(or if lift is not operating correctly)

1. Remove air hose from the air valve
2. Remove top cylinder by removing bolts that assemble top cylinder tube
3. Remove Piston and rod assembly
4. Remove wear ring and piston cup (the wear ring will be split and appear in a long straight length. This is normal and not broken.
5. Clean out internal wall of cylinder wash out with a solvent and use steel wool if necessary
6. Liberally grease internal surfaces of cylinder wall with chassis grease
7. Re-assemble unit

Lifting Capacity

PSIG at Unit Lift	Capacity in pound
50	3,900
60	4,680
70	5,460
80	6,240
90	7,020
100	7,800
110	8,580
120	9,360
130	10,140
140	10,920
150	11,700
160	12,480
170	13,260
180	14,040
190	14,820
200	15,600
DO NOT EXCEED 200 psi	

MODEL S-1400M JACK REPAIR PARTS ASSEMBLY



ID#	PART#	DESCRIPTION	QTY
1	278	Wheel 6" Steel	3
2	377	Spring pin 1/4 x 2 1/4	4
3	270	Shaft, Arm, Pivot 1" Dia	1
4	202	3/16 dia x 1 1/2 lg pin spr	2
5	4768	Shaft, Pivot 1 1/4 Dia	1
6	280	8" Steel Wheel w/Rubber Face	2
7	273	Cap Screw HH 1"-8 x 6	2
8	274	Lock Washer 1" med spring	2
9	268	Tube Spacer	2
10	271	Cap Screw HH 1/2-13 x 3-1/4	2
11	207	Lock Washer	4
12	223	1/2-13 Self Lock Hex Nut	4
13	224	1/2 Flat Washer plated	12
14	5757	Frame Weld	1
15	5758	Lift Arm Weld	1
16	4763	Bar, Parallel	2
17	378	Cap Screw HH 3/8-16 x 4	1
18	272	HHCS 1/2-13 X 1-3/4	2
19	210	Zerk Grease fitting 1/4 driv	5
20	1318	Washer Flat 5/16	2
21	212-S	Nut, Hex, Lock, 3/8-16	1
22	5033	Arm Weldment	1
23	5034	Sliding Arm Weldment	2
24	5035	Saddle Weldment	2
25	799	Hairpin, Cotter	2
26	281K	Hitch Saddle Pin 5/8" W/CLIP	2
27	800	1.264 ID Split Ring	2

ID#	PART #	DESCRIPTION	QTY
28	5029	Cylinder Weldment	1
29	206-GR	Cap Screw HH 1/2-13x 1 1/2	4
30	220	Elbow Street 90, 1.4 npt Male x 1/4 Female	1
31	231	1" Hand Grip	2
32	230	Handle Grip	1
33	5090	Handle Weld	1
34	226	Nut Hex 1/4-20 Nylok	2
35	639	HHCS 1/4-20 x 2 1/2	2
36	264	Compression Spring 1 1/4 I.D.	1
37	276	Cotter Pin 3/16 x 2	1
38	266	Safety Pin Lock	1
39	275	Piston Cup	1
40	358	Guide Ring	1
41	5032B	Piston Rod Weldment	1
43	267	Axle, Rear Wheel	1
44	259	Bearing cyl	1
45	219	Air Hose 1/4 ID	1
46	218	Fig 292 Air Control Valve Valve 1/4 npt	1
47	1840	1/4 x 2 Spring Pin	2
48	282	Decal for S1400M	1
49	940	Decal SERIAL NO.	1
50	930	Decal for S1400M	1
51	1817	Danger decal	1
52	1299	Decal, Lifting Capacity	1

Warranty Statement & Return Policy

Warranty & Workmanship you can depend on.

With over 25 years of manufacturing experience we maintain the ability to provide competitive prices while employing and manufacturing the majority of our products in the USA. Pride in our workmanship and standing behind each and every product is not just our claim but our uncompromising responsibility.

TSI equipment is warranted to be free from defects in materials and workmanship for a period of one year from the date of original purchase to the original owner. Repair labor is warranted for 90 days from the date of original purchase. Bushings, blades, bearings and normal wear and tear are not covered under warranty. Careless handling, negligence, misuse, abuse, mutilation, improper operation, making unauthorized repairs, additions, and or alterations automatically cancel this warranty and relieves TSI of any obligation. Cheetah tanks claimed to be defective while under warranty will be evaluated at our manufacturing plant and either repaired if possible or exchanged and returned or credit issued to the customer account at our discretion. Damage resulting from dropping the tanks will not receive warranty consideration. Warranty parts need to be returned prepaid to the plant for credit. Any replacement parts shipped from the plant will be shipped at the customer's expense. Machines requiring warranty work must be brought to the manufacturing plant in 201 Chelsea Rd, Monticello, MN or to a repair facility authorized by TSI.

Return Policy:

!!WARNING!! Goods returned without an RGA will be refused. A Returned Goods Authorization form must be obtained before returning any material or goods. All non-warranty returns will be subject to a 15% restocking fee plus any additional charges for reconditioning/repacking.

