

ITEM NO	PART NUMBER	DESCRIPTION	QTY	REV
1	5213605	HDSO-14 SERIES CROSS-TIE ASSEMBLY	1	N
2	5213607	HDSO-14 POWER SIDE RAMP ASSEMBLY	1	B
3	5213298	HDSO-14 OFF SIDE RAMP ASSEMBLY	1	K
4	5213469	HDSO-14P/AX RIGHT FRONT CARRIAGE ASSEMBLY	1	C
5	5213464	HDSO-14P/AX LEFT FRONT CARRIAGE ASSEMBLY	1	C
6	5600915	HDSO-14 SERIES SAFETY LADDER WELDMENT	2	B
7	5620605	HDSO-14 SERIES SAFETY LADDER WELDMENT	2	A
8	5620606	HDSO-14 POST WELDMENT	1	A
9	5620606	HDSO-14 POST WELDMENT	1	A
10	5601150	HDSO-14 SERIES POST WELDMENT	2	A
11	5215104	HDSO-14 SERIES DRIVE UP RAMP ASSEMBLY	2	E
12	5533303	NUT M20 X 2.5	4	-
13	5533303	WASHER M20 FLAT	4	-
14	5535017	NUT M20 X 2.5 N	4	-
15	5746384	HDS-14 SPACER SAFETY LADDER: 23.5mm LG	2	A
16	5535013	NUT M10 X 1.5 N	4	-
17	5535013	WASHER M10 X Ø20 FLAT	4	-
18	5530217	HBB M10 X 1.5 X 58	2	-
19	5746382	HDS-14 SPACER SAFETY LADDER: 15mm LG	2	A
20	5530167	HBB M10 X 1.5 X 45mm	2	-

DO NOT SCALE DRAWING

NAME	DATE
TM	9/23/2016
DRAWN	CA
CHECKED	6/15/2018

THIRD ANGLE PROJECTION

PROPERTY AND CONFIDENTIAL INFORMATION OF BENDPAK INC. ALL RIGHTS RESERVED. REPRODUCTION OR TRANSMISSION IN ANY FORM OR BY ANY MEANS WITHOUT THE WRITTEN PERMISSION OF BENDPAK INC. IS PROHIBITED.

BendPak
1645 LEMONWOOD DR.
SANTA PAULA, CA 93060

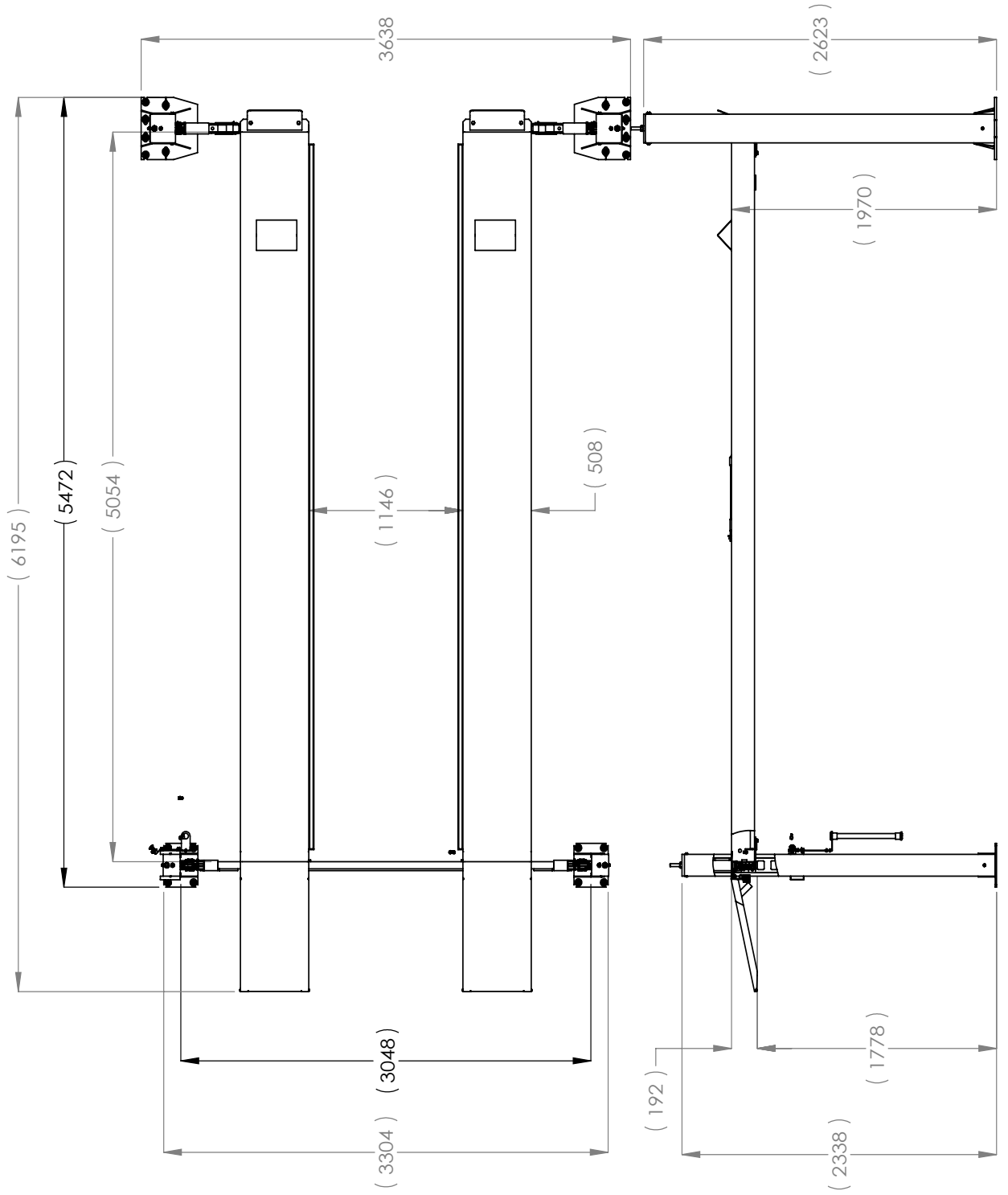
TITLE: HDSO-14P LIFT SUPERSTRUCTURE

SIZE DWG. NO. 5245417

REV H

SCALE: 1:45

SHEET 1 OF 1



BPI BendPak.

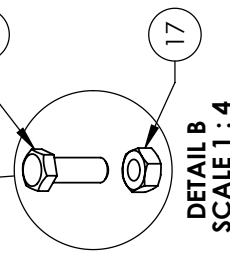
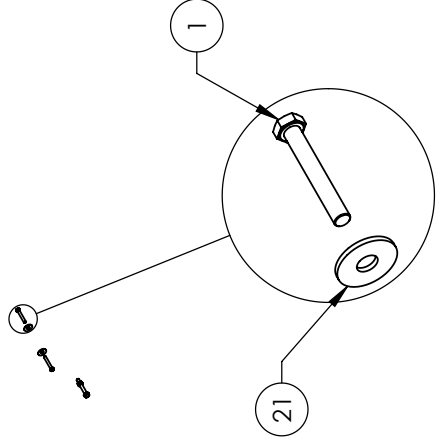
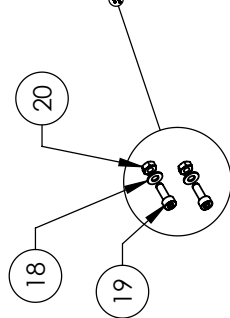
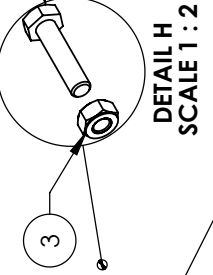
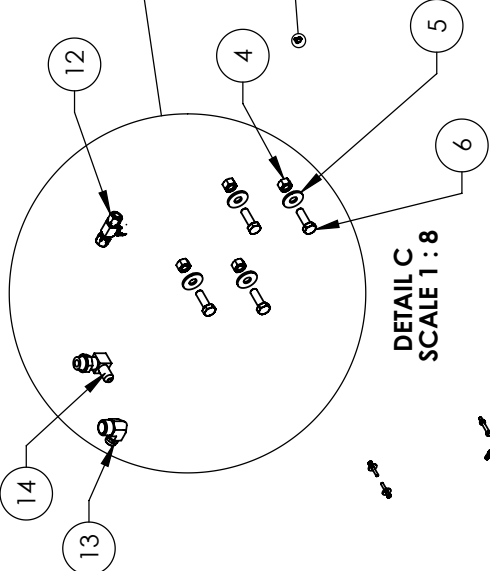
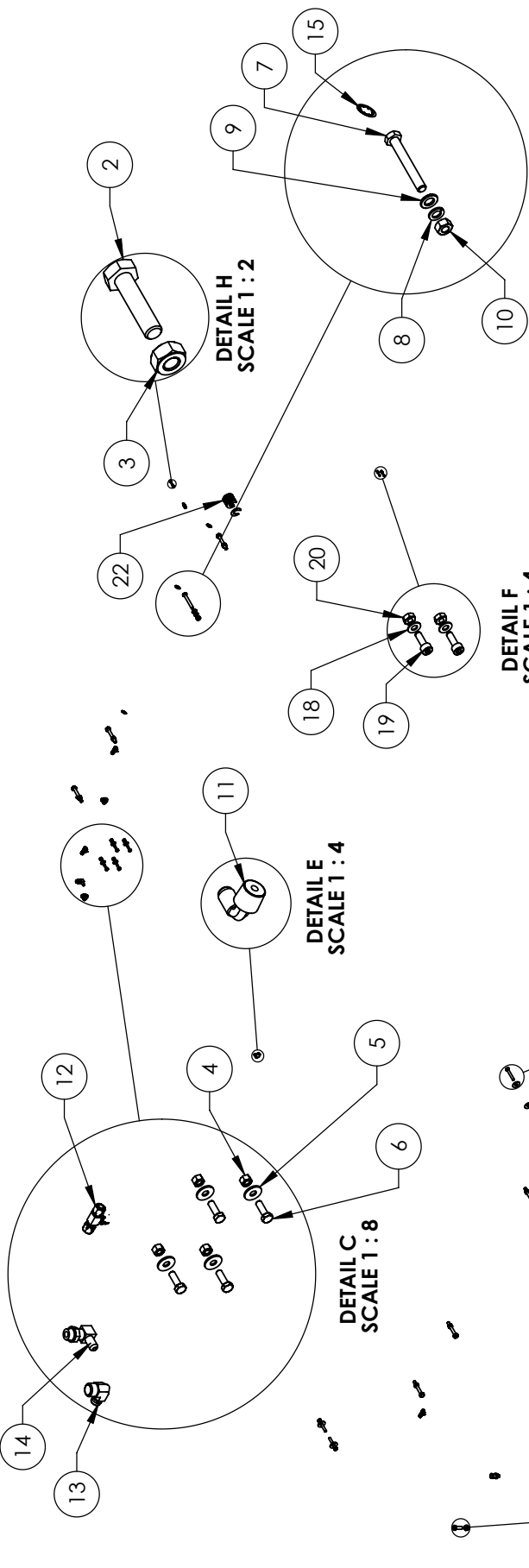
1645 LEMONWOOD DR.
SANTA PAULA, CA 93060

TITLE: HD50-14P PRODUCTION
LIFT VER D (CE CERT)

SIZE DWG. NO. 5260583 REV M

SCALE: 1:40

SHEET 2 OF 2



DETAIL F
SCALE 1 : 4

DETAIL D
SCALE 1 : 8

ITEM NO	PART NUMBER	DESCRIPTION	QTY	REV
1	5530767	HHB M10 x 1.5 x 70	4	-
2	5530766	HHB M6 x 1 x 25	4	-
3	5533359	NUT M6 x 1.0 NPT	4	-
4	5533001	NUT M8 x 1.25 NPT	4	-
5	5548340	WASHER M8 x 24 FLAT	4	-
6	5530040	HHB M8 x 1.25 x 25	4	-
7	5530040	HHB M12 x 1.75 x 20 CL 8.8	6	-
8	5550009	WASHER M12 SPRING LOCK	6	-
9	5545347	WASHER M12 FLAT WASHER	6	-
10	5533354	NUT M12 x 1.75	8	-
11	5550106	FIG ELB -04 JIC-06 NPT	1	-
12	5550395	FIG TEE -04 COMP X-04 COMP X-04 COMP	3	-
13	5550089	FIG ELB -04 COMP X-06 NPT	2	-
14	5550088	FIG ELB -04 JIC-06 ORB	1	-
15	5505032	ROTOR CLIP 18mm SS	4	-
16	5530107	HHB M14 x 2.0 x 40	4	-
17	5535107	NUT M14 x 2.0	4	-
18	5545009	WASHER Ø4.3 x Ø9mm x 0.8mm	2	-
19	5530008	SHCS M4 x 0.7 x 12 BOC	2	-
20	5535010	NUT M4 x 0.7	2	-
21	5545027	WASHER M12 x Ø37 x 3mm	4	-
22	5545535	C WASHER SHIM FOR TITS	20	-

DO NOT SCALE DRAWING

NAME	DATE
AC	08/08/2008
DB	10/04/2016

DRAWN: AC
CHECKED: DB

THIRD ANGLE PROJECTION

PROPRIETARY AND CONFIDENTIAL
THE INFORMATION CONTAINED IN THIS DRAWING IS THE PROPERTY OF BENDPAK INC. REPRODUCTION IN PART OR AS A WHOLE WITHOUT THE WRITTEN PERMISSION OF BENDPAK INC. IS PROHIBITED.

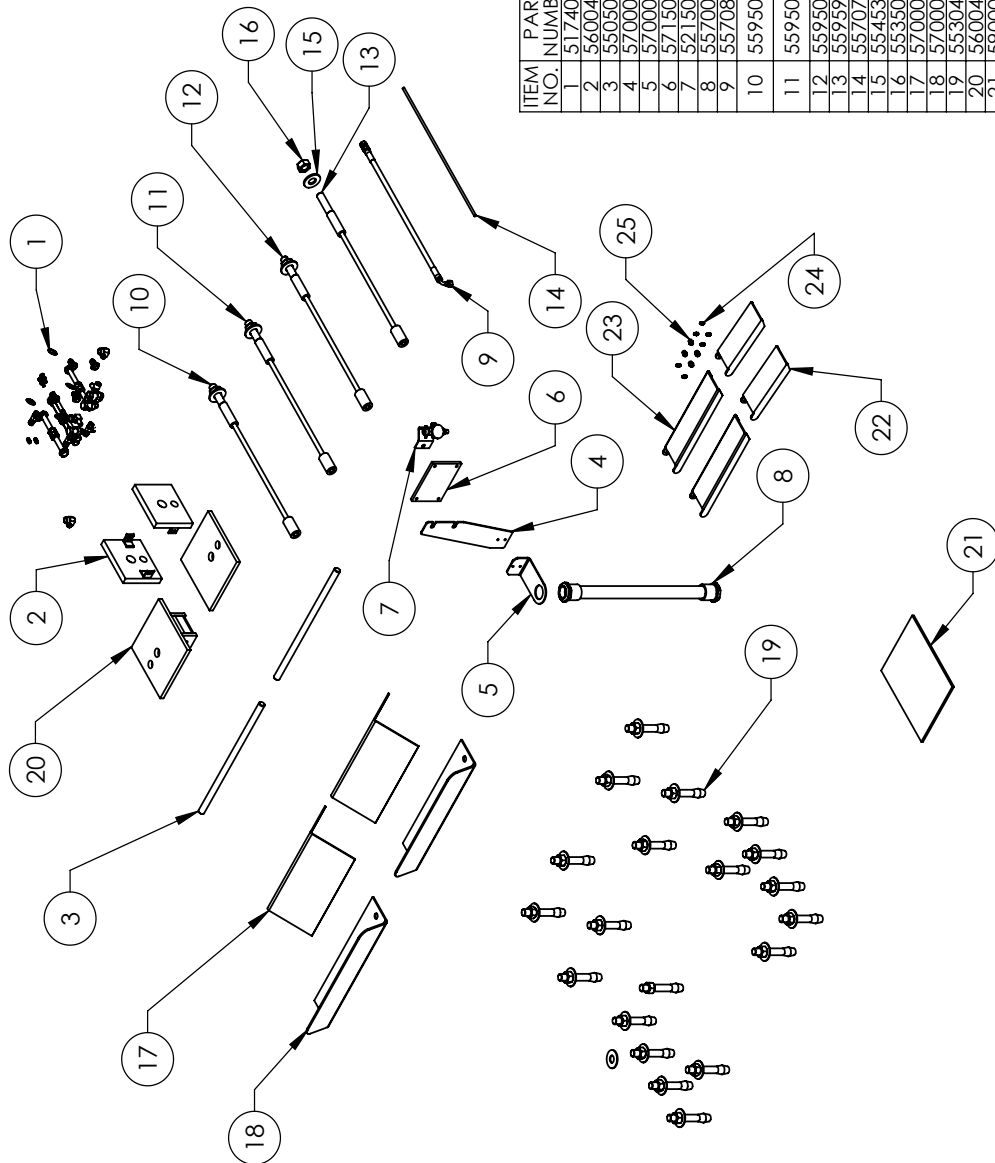
BendPak.
1645 LEMONWOOD DR.
SANITA PAULA, CA 93060

TITLE: PARTS BAG HDSO-14 SERIES

SIZE: A
DWG. NO.: 5174099
REV: D

SCALE: 1:30

SHEET 1 OF 1



ITEM NO.	PART NUMBER	DESCRIPTION	QTY.	REV
1	5174099	PARTS BAG HDSO-14 SERIES	1	D
2	5600406	HD-14T/HDS-14 TOP PLATE WELDMENT	2	B
3	5505009	HD/HDS-14 DRIVE LIP RAMP PIN	2	D
4	5700029	HD-SERIES FLEX TUBE BRACKET PLATE	1	F
5	5700033	HD-SERIES FLEX TUBE ANGLE	1	E
6	5715003	POWER UNIT VIBRATION DAMPENER	1	B
7	5215096	PUSH BUTTON AIR ASSEMBLY	1	G
8	5570050	FLEX TUBE ASSEMBLY 1320mm	1	B
9	5570871	HDS-14L/HDSO-14 SERIES HOSE ASSY Ø6.4 x 41.66mm	1	B
10	5595065	HDS/HDSO-14/14LSX/14LSXE, HDS-14X CABLE ASSEMBLY Ø12 x 4100mm ST	1	D
11	5595066	HDS/HDSO-14/14LSX/14LSXE, HDS-14X CABLE ASSEMBLY Ø12 x 5732mm ST	1	D
12	5595089	HDSO-14P/AX CABLE ASSEMBLY Ø12 x 11302mm ST	1	C
13	5595931	HDSO-14P/AX CABLE ASSEMBLY Ø12 x 9639mm ST	1	B
14	5570795	1/4" POLY-FLO TUBING	24000mm*	---
15	5545345	WASHER M22 x 50mm FLAT	4	---
16	5535011	NUT M22 x 2.5 NL	4	---
17	5700072	WHEEL CHOCK	2	B
18	5700032	TIRE STOP	2	D
19	5530456	AB 3/4" x 4 - 3/4"	20	---
20	5600407	HDSO-14 TOP PLATE WELDMENT	2	B
21	5900001	INSTALLATION MANUAL HDSO-14P/AX	1	---
22	5716629	HDS-14 CROSSTUBE COVER, PLASTIC	2	A
23	5716631	HDSO-14 CARRIAGE CLOSEOUT COVER, PLASTIC	2	A
24	5550025	FIG GRS M6 x L0	6	---
25	5550026	FIG GRS 1/8NPT	4	---

DO NOT SCALE DRAWING

DRAWN	TM	DATE
CHECKED	CA	7/6/2018

THIRD ANGLE PROJECTION

BP BendPak.
1645 LEMONWOOD DR.
SANITA PAULA, CA 93060

TITLE: HDSO-14P PARTS BOX

SIZE DWG. NO. 5250058

REV E

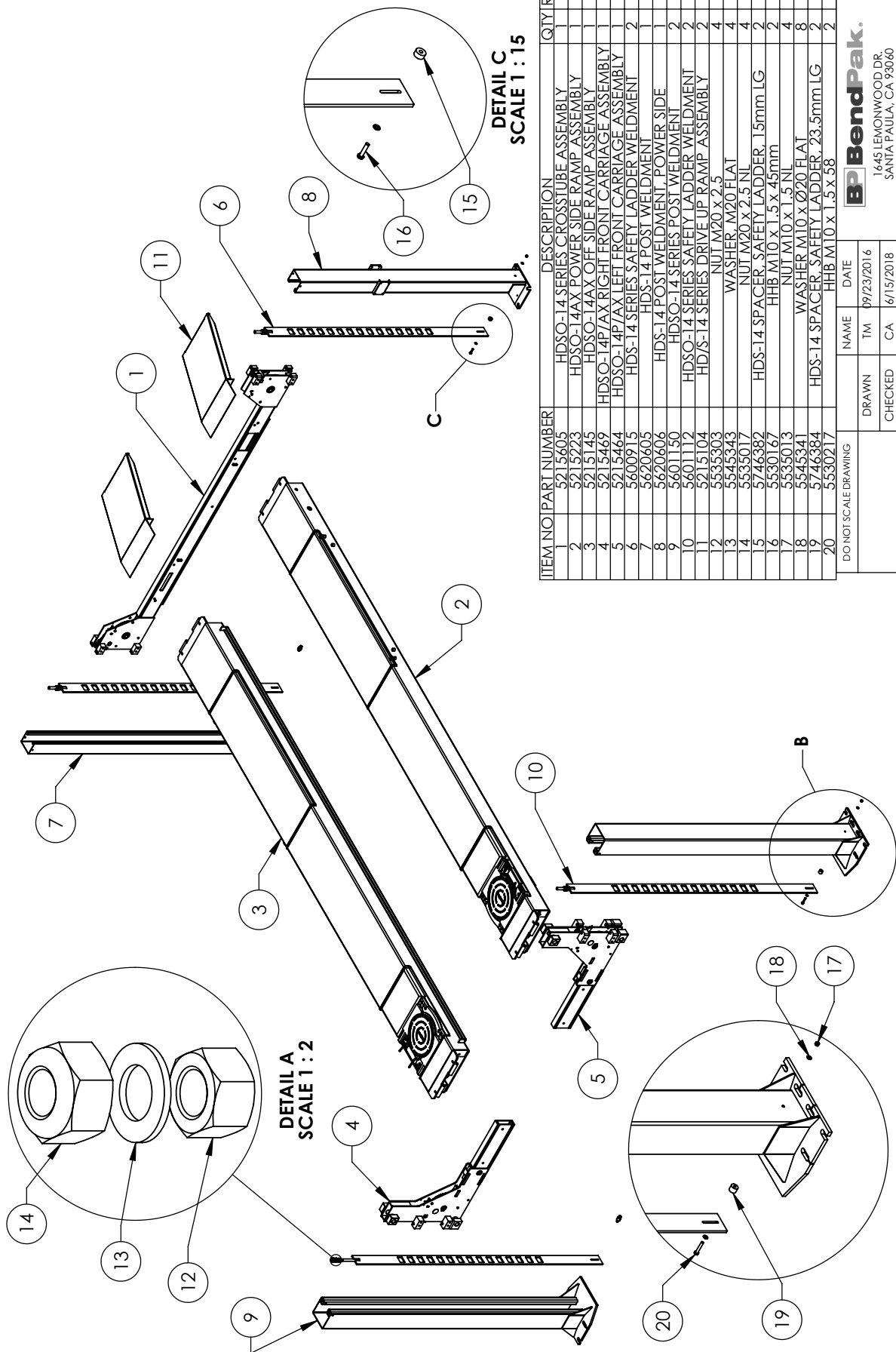
SCALE: 1:20

SHEET 1 OF 1

PROPRIETARY AND CONFIDENTIAL
THE SOFTWARE AND DRAWING IS
THE SOLE PROPERTY OF BENDPAK INC.
REPRODUCTION IN PART OR AS A WHOLE WITHOUT
PERMISSION BY BENDPAK INC. IS
PROHIBITED.

SMILEY FACE

DIMENSIONS ARE IN MM



ITEM NO	PART NUMBER	DESCRIPTION	QTY	REV
1	5215605	HDSO-14 SERIES CROSSTUBE ASSEMBLY	1	N
2	5215223	HDSO-14AX POWER SIDE RAMP ASSEMBLY	1	X
3	5215145	HDSO-14AX OFF SIDE RAMP ASSEMBLY	1	P
4	5215469	HDSO-14P/AX RIGHT FRONT CARRIAGE ASSEMBLY	1	G
5	5215464	HDSO-14P/AX LEFT FRONT CARRIAGE ASSEMBLY	1	G
6	5600915	HDS-14 SERIES SAFETY LADDER WELDMENT	2	B
7	5620605	HDS-14 POST WELDMENT	1	A
8	5620606	HDS-14 POST WELDMENT - POWER SIDE	1	A
9	5601150	HDSO-14 SERIES POST WELDMENT	2	A
10	5601172	HDSO-14 SERIES SAFETY LADDER WELDMENT	2	A
11	5215104	HDS-14 SERIES DRIVE UP RAMP ASSEMBLY	2	H
12	5535303	NUT M20 x 2.5	4	-
13	5545343	WASHER M20 FLAT	4	-
14	5535017	NUT M20 x 2.5 NL	4	-
15	5744382	HDS-14 SPACER SAFETY LADDER 15mm LG	2	A
16	5530167	HBB M10 x 1.5 x 45mm	2	-
17	5539013	HBB M10 x 1.5 NL	4	-
18	5545341	WASHER M10 x Ø20 FLAT	8	-
19	5744384	HDS-14 SPACER SAFETY LADDER 23.5mm LG	2	A
20	5530217	HBB M10 x 1.5 x 58	2	-

DO NOT SCALE DRAWING

NAME	DATE
TM	09/23/2016
CHECKED	CA
	6/15/2018

DIMENSIONS ARE IN MM

THIRD ANGLE PROJECTION

BP BendPak.
1645 LEMONWOOD DR.
SANTA PAULA, CA 93060

TITLE: HDSO-14AX LIFT SUPERSTRUCTURE

SIZE DWG. NO. 5245416

REV J

SCALE: 1:45

SHEET 1 OF 1

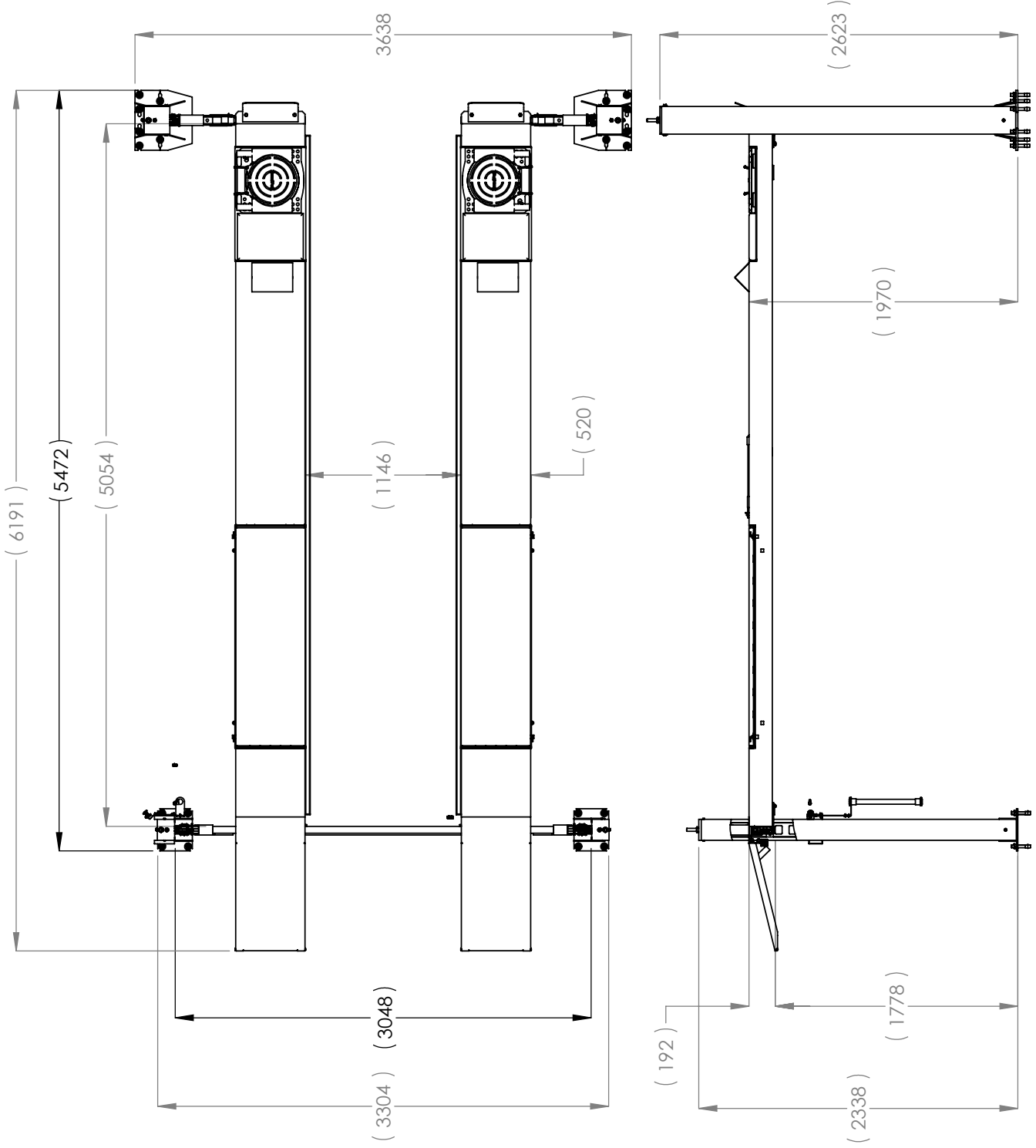
PROPRIETARY AND CONFIDENTIAL
THIS DRAWING IS THE PROPERTY OF BENDPAK INC. ANY REPRODUCTION IN PART OR AS A WHOLE WITHOUT PERMISSION OF BENDPAK INC. IS PROHIBITED.

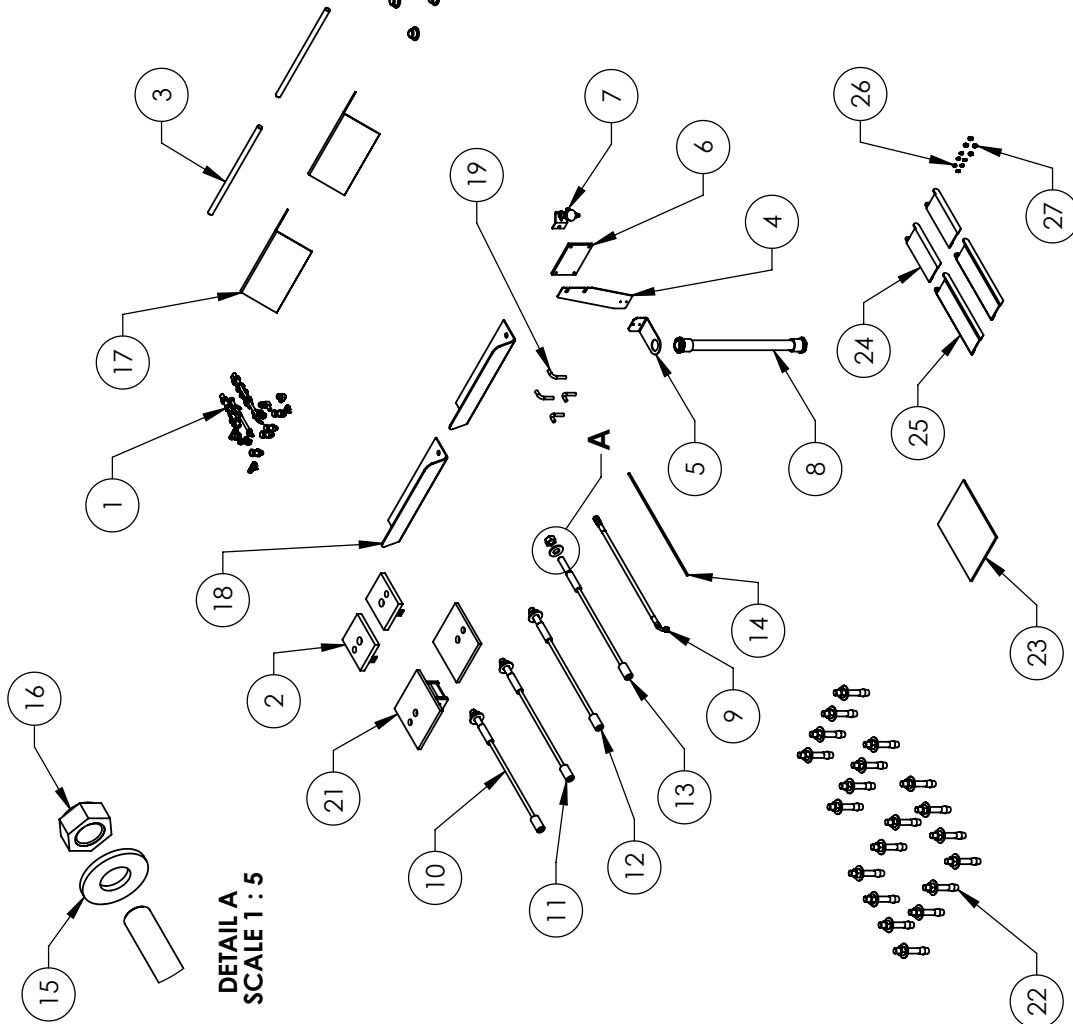
BP BendPak.
 1645 LEMONWOOD DR.
 SANTA PAULA, CA 93060

TITLE: HD50-14AX PRODUCTION
 LIFT VER D (CE CERT)

SIZE DWG. NO. 5260584
 REV N

SCALE: 1:40 SHEET 2 OF 2





DETAIL A
SCALE 1:5

ITEM NO.	PART NUMBER	DESCRIPTION	QTY.	REV
1	5174099	PARTS BAG HDSO-14 SERIES	1	D
2	5600406	HD-14/14S/14SX/14LSXE, HD-14X CABLE ASSEMBLY Ø12 x 11302mm ST	2	B
3	5505009	HD/HDS-14 DRIVE UP RAMP PIN	2	D
4	5700029	HD-SERIES FLEX TUBE BRACKET PLATE	1	F
5	5700033	HD-SERIES FLEX TUBE ANGLE	1	E
6	5715003	POWER UNIT VIBRATION DAMPENER	1	B
7	5215096	PUSH BUTTON AIR ASSEMBLY	1	G
8	5570050	FLEX TUBE ASSEMBLY 1320mm	1	B
9	5570871	HDS-14L/HDSO-14 SERIES HOSE ASSY Ø6.4 x 4166mm	1	B
10	5595065	HDS/HDSO-14/14LSX/14LSXE, HDS-14X CABLE ASSEMBLY Ø12 x 4100mm ST	1	D
11	5595066	HDS/HDSO-14/14LSX/14LSXE, HDS-14X CABLE ASSEMBLY Ø12 x 5732mm ST	1	D
12	5595089	HDSO-14P/AX CABLE ASSEMBLY Ø12 x 11302mm ST	1	C
13	5595931	HDSO-14P/AX CABLE ASSEMBLY Ø12 x 9639mm ST	1	B
14	5570795	1/4" POLY-FLO TUBING	24000mm*	-
15	5545345	WASHER M22 x 50mm FLAT	4	B
16	5535011	NUT M22 x 2.5 NL	4	-
17	5700072	WHEEL CHOCK	2	B
18	5700032	TIRE STOP	2	D
19	5745050	SLIP PLATE LOCK PIN	4	A
20	5575015	656A SERIES 1" BALL CASTER	60	-
21	5600407	HDSO-14 TOP PLATE WELDMENT	2	B
22	5530456	AB 3/4" x 4 - 3/4"	20	-
23	5900001	INSTALLATION MANUAL HDSO-14P/AX	1	-
24	5716629	HDS-14 CROSS TUBE COVER, PLASTIC	2	A
25	5716631	HDSO-14 CARRIAGE CLOSEOUT COVER, PLASTIC	2	A
26	5550025	FIG GRS M6 X L0	6	-
27	5550026	FIG GRS 1/8NPT	4	-

DO NOT SCALE DRAWING

NAME	DATE
TM	09/23/2016
DRAWN	
CHECKED	CA 7/6/2018

THIRD ANGLE PROJECTION

BP BendPak.
1645 LEMONWOOD DR.
SANTA PAULA, CA 93060

TITLE: HDSO-14AX PARTS BOX

SIZE DWG. NO. 5250059

REV F

SCALE: 1:25

SHEET 1 OF 1

PROPRIETARY AND CONFIDENTIAL
THE INFORMATION CONTAINED IN THIS DRAWING IS THE PROPERTY OF BENDPAK INC. ANY REPRODUCTION IN PART OR AS A WHOLE WITHOUT THE WRITTEN PERMISSION OF BENDPAK INC. IS PROHIBITED.

DIMENSIONS ARE IN MM