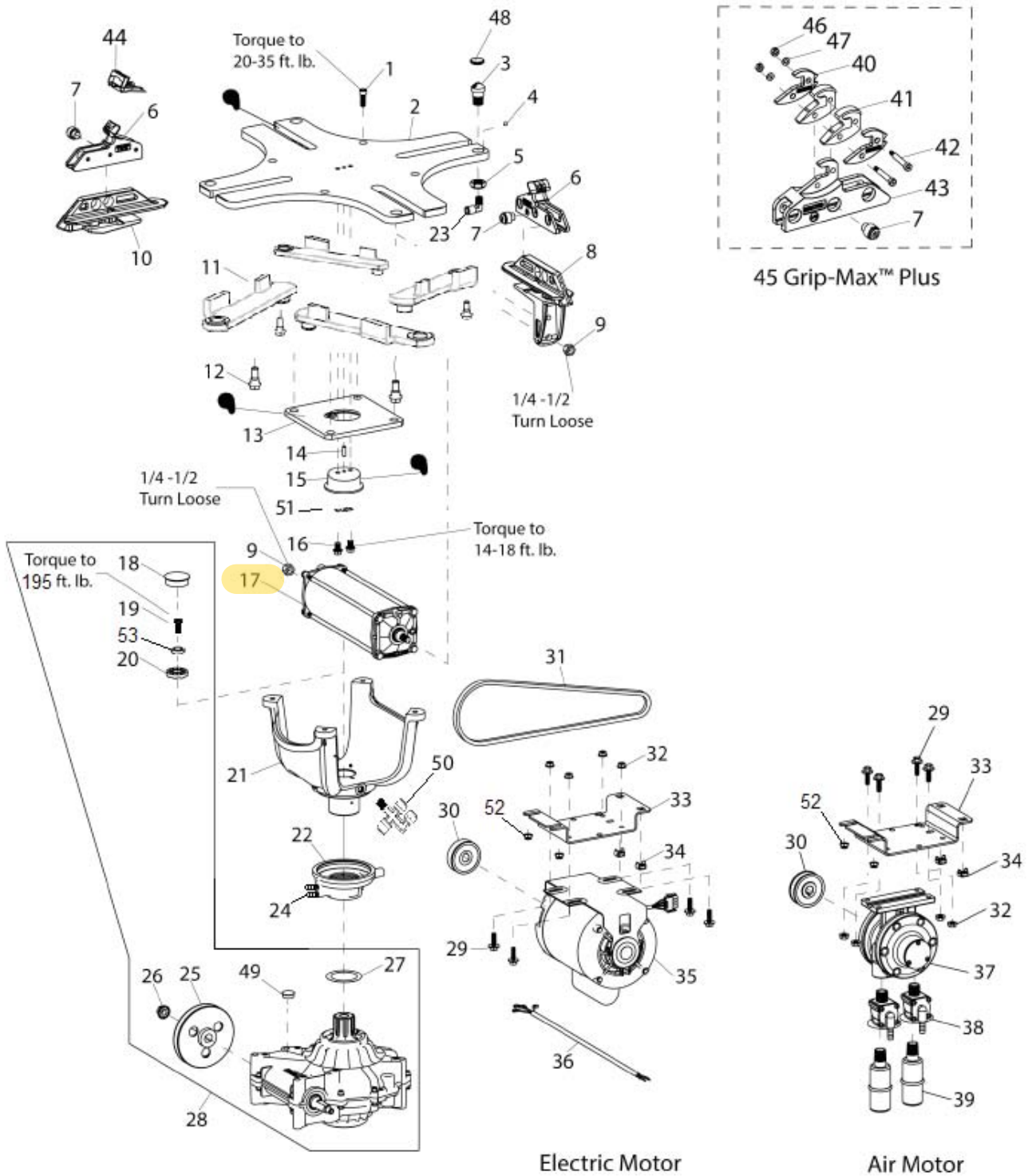


Table Top and Shaft Housing Assembly

Item	Part No.	Description	Item	Part No.	Description
1	8181929	3/8-16 x 1", Gr.8 Skt. Hd. Cap Scr.	31	8180047	Motor V-Belt, 4L380
2	8181704	Table Top Plate		85608496	Motor V-Belt, 4L390
3	8182024	Inflation Nozzle	32	8182178	5/16-18, Hex. Whiz Lock Nut
4	8182025	1/4" Steel Ball	33	85609921	Motor Mounting Bracket
5	8182083	3/4" Jam Nut	34	8143044	Tinnerman Sq. Captive Nut 3/8-16
6	8184126EX	Adjustable Rim Clamp	35	8184691	Motor, Electric 115V
7	81822501	Adj. Clamp Plunger/Spring Assy.		81827321	Motor, Electric 220V, 50Hz, 1ø
8	8182248	Carrier/Cover - Cylinder End		85609751	Motor, Electric 115V, 60Hz, 2-speed (90x only)
9	8101039	1/2" Lock Nut, Gr.5		85610405	Motor, Electric 220V, 50/60Hz, 2-speed (90x only)
10	8182249	Carrier/Cover - Clamp Adj.			
11	85610388	Pivot Link W/C	36	8184562	Motor Cable Assy, 4-wire w/plug, 115V
12	8182279	Adj. Clamp Link Bolt		8181511	Motor Cable Assembly, 4-wire, 220V
13	8181731	Table Top Pivot Plate		85000632	Motor Cable Assembly, 5-wire, 220V
14	8183476	ø1/4" x 3/4" Roll Pin		85610389	Motor Cable Assembly, 2-speed, 115V
15	8181733	Pivot Block		85610438	Motor Cable Assembly, 2-speed, 220V
16	85610716	5/16-18 x 5/8" Flange Whiz-lock Scr.	37	8181190	Air Motor, Gast. 6AM
†17	8182613	Table Top Cylinder Assembly	38	85606398	Exhaust Valve
18	8182627	1-5/8" Dia. Cap Plug	39	8181206	1/2" NPT Muffler
19	85611050	Screw-SHCS,M16x40,GR12.9	40	85607160	3-position Laminated Clamp Cover Plus w/Points for Blk
20	8182979	ø16mm Molded Washer		85607429	3-position Laminated Clamp Cover Plus w/o Points for Blk
21	8181990	Spider Assembly		85000768	3-position Laminated Clamp Cover Plus w/Points for Wht
22	8182619	Rotary Coupling Assembly		85600314	3-position Laminated Clamp Cover Plus w/o Points for Wht
23	81819981	Fitting-Ell,Pkg	41	8560716108	Laminated Clamp Plus Grip Blk (8 pk)
24	8104844	Fitting-1/8 NPTM X 1/4 Hose		8560716140	Laminated Clamp Plus Grip Blk (40 pk)
25	85606734	Transmission Pulley (3-hole)		8500059408	Grip-Clmp, Lmntd, Wht , 8/PKG
	85607708	Transmission Pulley (4-hole)		8500059440	Grip-Clmp, Lmntd, Wht , 40/PKG
	8181658	Transmission Pulley (6-hole)	42	850006102	1/4 x 1-1/4 x #10-24 Shoulder Screw
26	8140567	1/2-13, Hex. Whiz-lock Nut	43	85607159	3-position Laminated Clamp Plus
27	8183156	ø2" X ø2 3/4" x .010 Washer	**44	8183604	Bootie Kit, Rim Clamp, Pkg of 10
28	85608497	Transmission Kit	**45	85607787	Grip Max Plus™, Laminated Clamps, Pkg. of 4
29	940084	5/16-18 x 1 1/4 Ser. Wash.Hd.Scr.		85607786	Grip Max Plus™, Laminated Clamps (External Clamp Only), Pkg. of 4
30	8184674	Motor Pulley (All except 90X)	46	81826822	#10-24 Rvsble Hex Lk Nut
	85609750	Motor Pulley (90X 2 speed motor ONLY)	47	8301805	#10 Washer
			48	85609097	Hole Plug (Table w/o Inflation Jets)
			49	85610108	Transmission Hole Plug
			50	8560026401	Manifold-1/4NPT 3X3/8 TBE
			51	85610717	Retainer Bracket
			52	8106303	Nut-Hex,3/8-16,LK,Whz,Znc
			53	85611049	Washer-5/8 M16 Lckng Pr

†Cylinder Assemblies

**Accessory Item



 APPLY GREASE TO THESE LOCATIONS