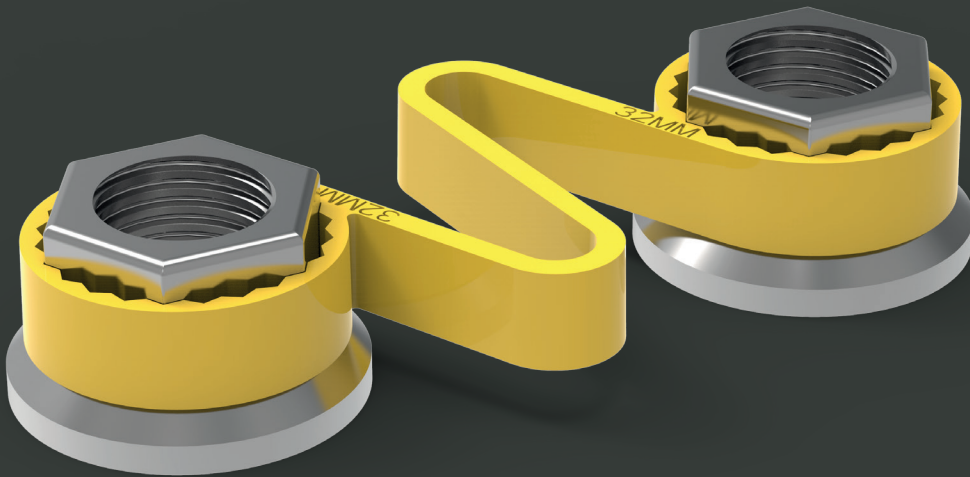


Checklink®

Checklink® is a loose wheel nut indicator with a retaining function.

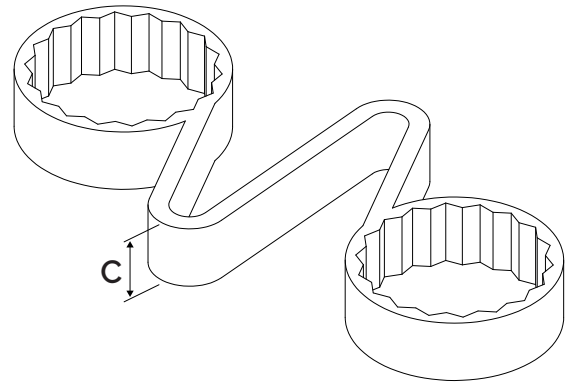


AVAILABLE

Colour	Size (mm)
Fluoro Yellow	17
	18
Red	19
	20
	21
Solid Yellow	22
	23
	24
Green	25
	26
	27
Orange	28
	29
Blue	30
	31
Olive Grey	32
	33
	34
Black	35
	36
Silver Grey	37
	38
	39
White	40
	41
	42
	43
	44
	45
	46
	47
	48
	49
	50

Checklink®

Product: Checklink® Yellow 33mm
Product Code: CLY33



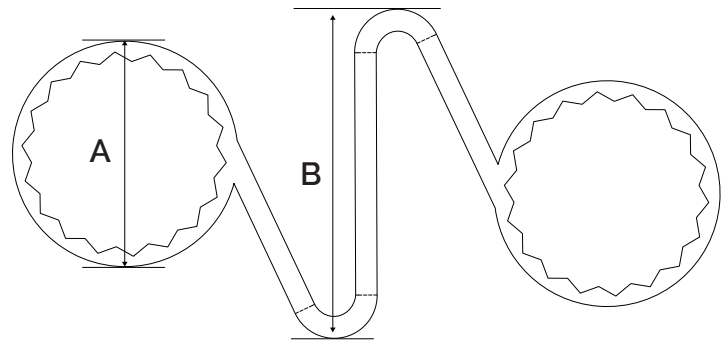
Function: The Checklink® combines a loose wheel nut indicator and a retainer, to indicate movement of the wheel nuts and to help retain them in place. The Checklink® will also melt to indicate any overheating issues.

Material: We use high-grade virgin polymer to ensure product quality and reliability as an overheating indicator.

Melt temperature:

125°C/257°F (standard version).

165°C/329°F (HT version).



Application: Mainly for commercial vehicles such as buses, but also trucks, agricultural vehicles, dangerous goods transporters, etc. It is used wherever safety critical fasteners can loosen due to heavy vibrations and need retaining.

Main benefits: Improves the safety of nut fittings. Enables quick and easy visual checks and monitoring. Reduces maintenance costs by saving time and money. Helps retain wheel nuts in place.

Sizes: All sizes are measured across the flat (a/f) of the nut (in mm). Available in sizes as shown on the front page.

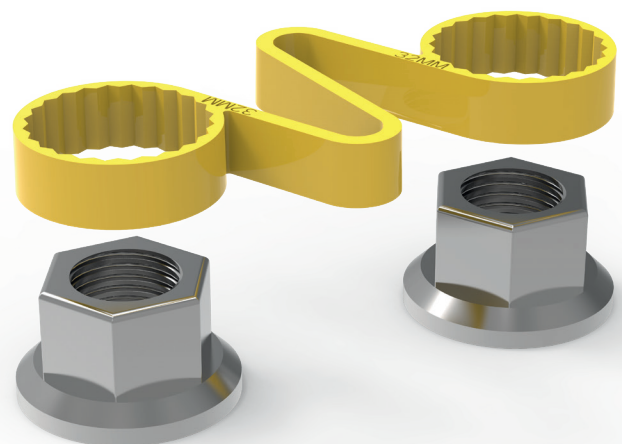
Colour: Other colours are available subject to quantity.

Specifications

A = 41.3 mm

B = 55 mm

C = 13 mm



SPECIFICATIONS ARE VALID FOR ALL COLOURS IN THIS SIZE

**GLOBAL LEADERS
 IN WHEEL SAFETY**

Tel: +44 (0)1524 271 200
 info@checkpoint-safety.com
 www.checkpoint-safety.com

Checkpoint®
 THE ORIGINAL AND THE BEST