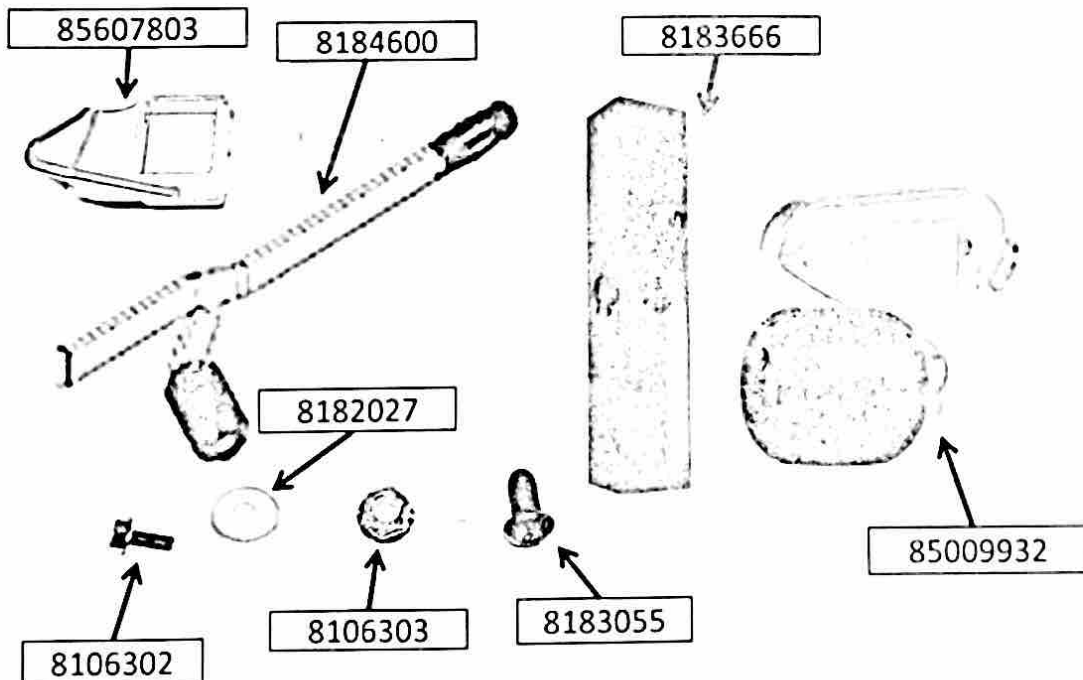


Tire Changer Accessory Package

85609077-Duckhead Bead Roller Package

RETURN HOME

- o 24x6x6 Carton
- o 1- 8183666- Storage Tube
- o 1- 8106302- Screw
- o 1- 8106303- Hex Nut
- o 1- 8182027- Washer
- o 1- 8183055- Screw
- o 1- 85607803- Duckhead Roller Mount
- o 1- 8184600- Bead Roller
- o 1- 8184053- Bead Roller Kit Instruction
- o 1- 85600311- Duckhead Roller Instruction
- o 1- 85009932- Roller Duckhead Assembly
 - o 1- 906101- Screw
 - o 1- 8112310- Washer
 - o 1- 8183663- Center Drop Roller Spacer
 - o 1- 85607804- Pull Ring Plunger
 - o 1- 8183664- Center Drop Roller Tool
 - o 1- 85607802- Duckhead Roller Finger



Work Order: _____ Weight: _____

Checked By: CM

HNY0117 8/16

Duckhead® Roller Kit 85606462

This is an addendum instruction for the Duckhead Roller attachment. If you need copies of COATS® tire changer operating instructions call 1-800-688-6359 or refer to the internet at www.ammcoats.com.

Duckhead Roller Mount Installation

1. Remove screw, washer and duckhead.
2. Install the arm bracket (duckhead roller mount) as shown with its hole positioned toward the inner side of the swing arm.

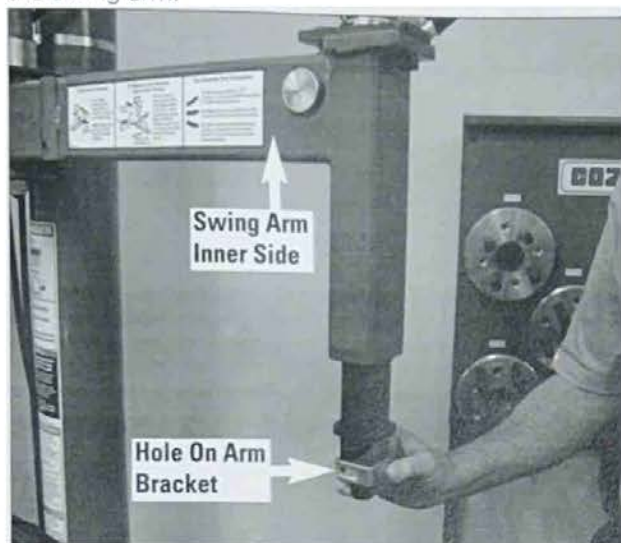


Figure 1 - Position Hole On Arm Bracket To Face Inner Side of Swing Arm

3. Then, assemble in order the duckhead, washer and screw.



Figure 2 - Reinstall Duckhead

4. Torque screw to: 20 - 26 ft-lbs.

Using the Duckhead Roller

1. Lubricate both tire beads liberally. Performance tires will require more lubrication than standard passenger car tires.

2. Mount the lower bead. In most cases, the lower bead will mount easily.

Note: Mounting the top bead can be very difficult when mounting new tires on performance and custom wheels. Proceed slowly and cautiously.

3. For top bead installation, rotate table top until the valve stem on wheel is 180 degrees ahead of the duckhead (9 o'clock position). Attach duckhead roller assembly to the duckhead using RoboArm™ to assist (fig 3).



Figure 3 - Position Valve Stem 180° Ahead of Duckhead

- 3a. Make sure the duckhead roller assembly is fully engaged on the arm bracket; with no gap (figure 4).

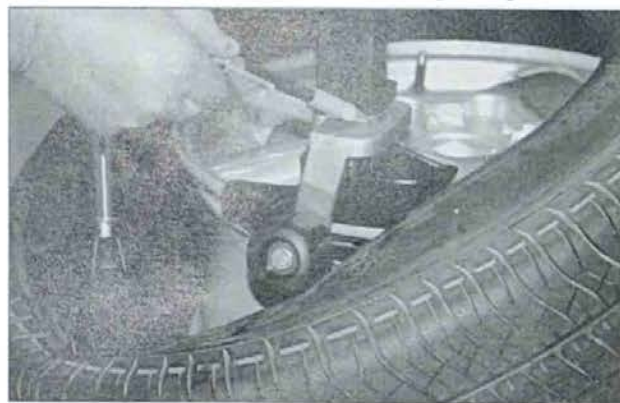


Figure 4 - Duckhead Roller Properly Mounted On Bracket

3b. Pull the ring on the duckhead roller to engage it to the arm bracket, (figure 5). Note that pulling the ring will also disengage the duckhead roller from the arm bracket

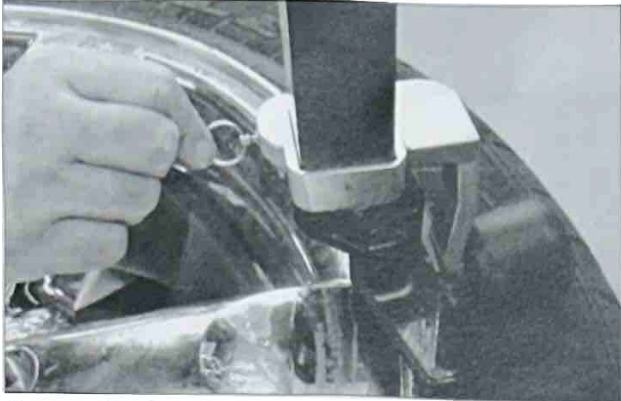


Figure 5 - Pull Ring/Pin To Engage Duckhead Roller

4. Use RoboArm™ to push down on tire 90 degrees clockwise from duckhead to allow bead to utilize drop center area of rim. Apply extra lubricant to mount upper bead.



Figure 6 - Use RoboArm To Hold Tire In Rim Drop Center

5. Depress table top pedal and rotate tire until bead is mounted. Be careful to ensure bead stays in the rim drop center in the area ahead of duckhead.

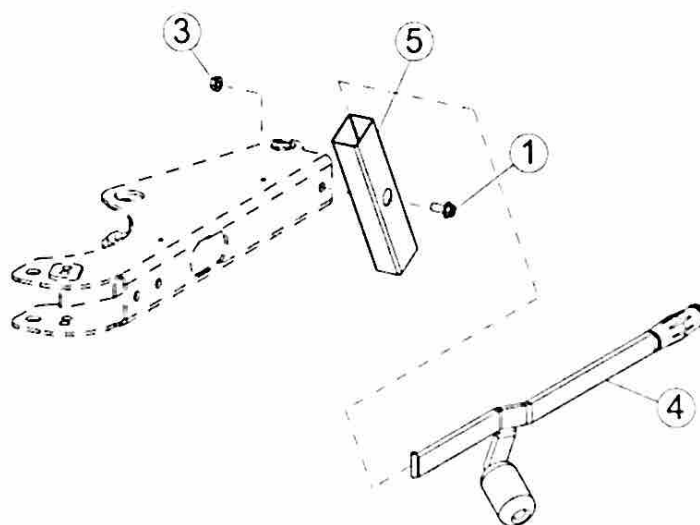
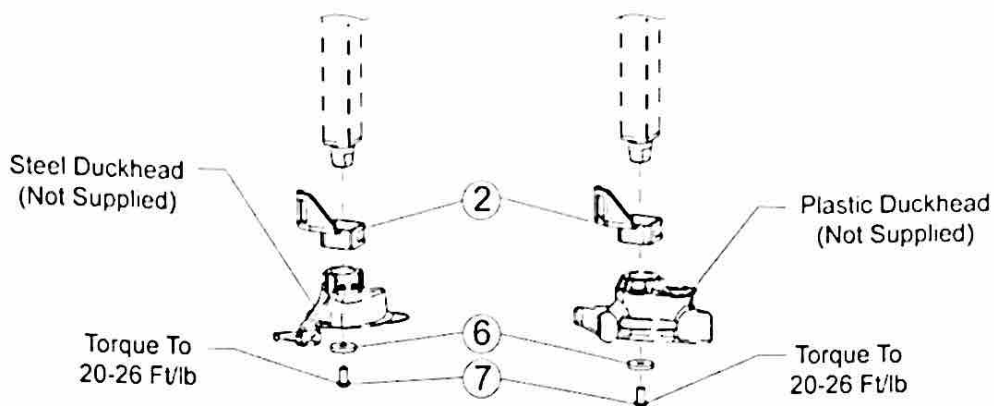


Figure 7 - Mounting Top Bead

COATS

Bead Roller Tool Kit #8184052, 8184052-01 for Rim Clamp Tire Changers

COATS, Inc. • Hennessy Industries • 1601 J.P. Hennessy Drive, LaVergne, TN 37086-3565
(800) 688-6359 • (615) 641-7533 • (615) 641-5104 FAX • www.ammcoats.com



ITEM	PART NO.	DESCRIPTION
1	8106302	3/8-16 x 7/8 Hex Head Cap Screw
2	85607803	Duckhead Roller Mount
3	8106303	3/8-16 Hex Nut
4	8184600	Bead Roller Tool Assembly
5	8183666	Storage Tube
6	8182027	Flat Washer
7	8183055	3/8-16 Button Head Cap Screw