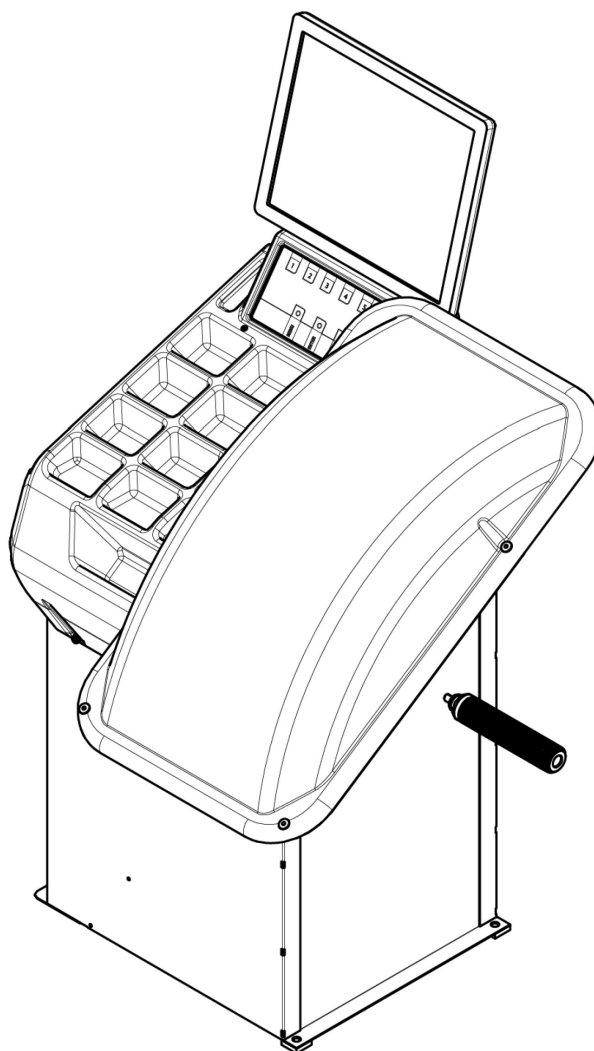


# COATS®

## 1185 Wheel Balancer



### *Parts Identification*

READ these instructions before placing unit in service. KEEP these and other materials delivered with the unit in a binder near the machine for ease of reference by supervisors and operators.

**HENNESSY**  
INDUSTRIES

1601 J. P. Hennessy Drive, La Vergne, TN USA 37086 615/641-7533 800/688-6359 [www.coatsgarage.com](http://www.coatsgarage.com)  
HENNESSY INDUSTRIES LLC Manufacturer of COATS®, AMMCO® and BADA® Automotive Service Equipment and Tools.

Manual Part No.: 85611763 00  
Revision: 8/20

## Parts Identification

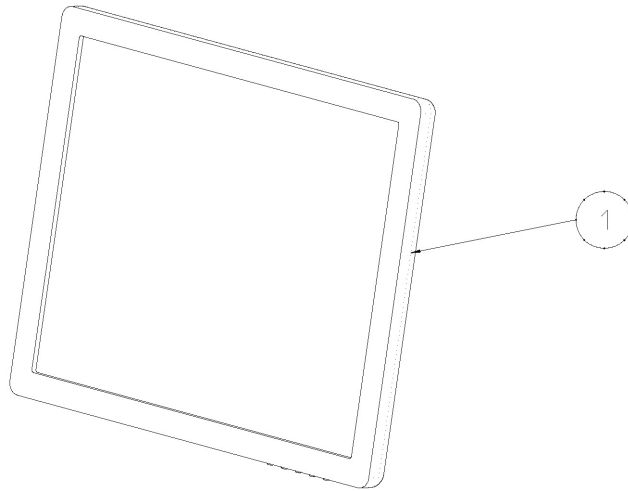
The following pages include parts breakdowns with exploded view illustrations to help with ordering replacement or spare kits. Assemblies are noted where it is recommended that individual parts not be ordered separately. Note that the parts view illustrations are for multiple models and not all parts shown are on all models. Every effort is made to supply accurate exploded views, however, due to interim changes in manufacturing operations, some units may not be exactly as illustrated.

### Table of Contents

<b>Monitor</b> .....	<b>3</b>
<b>Touch Panel</b> .....	<b>3</b>
<b>Weight Tray</b> .....	<b>3</b>
<b>Wheel Guard Assembly</b> .....	<b>4</b>
<b>Hood Switch</b> .....	<b>5</b>
<b>Laser Assembly</b> .....	<b>5</b>
<b>Threaded Shaft</b> .....	<b>6</b>
<b>Complete Spindle 115V</b> .....	<b>6</b>
<b>A &amp; D Arm Assembly</b> .....	<b>7</b>
<b>Index Gauge</b> .....	<b>7</b>
<b>Encoder</b> .....	<b>8</b>
<b>115V Transformer</b> .....	<b>9</b>
<b>Power Board</b> .....	<b>9</b>
<b>Electrical Schematic</b> .....	<b>10-11</b>

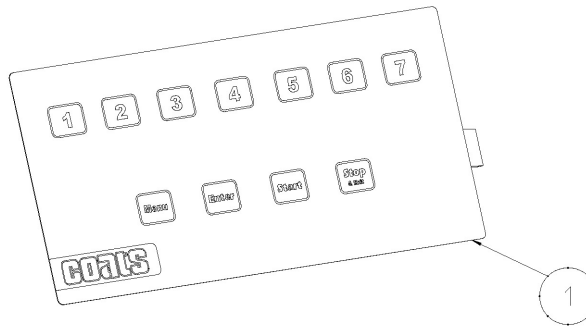
## Monitor

Item No	Part No.	Description
1	8801100192	17" Monitor .....SP....ST



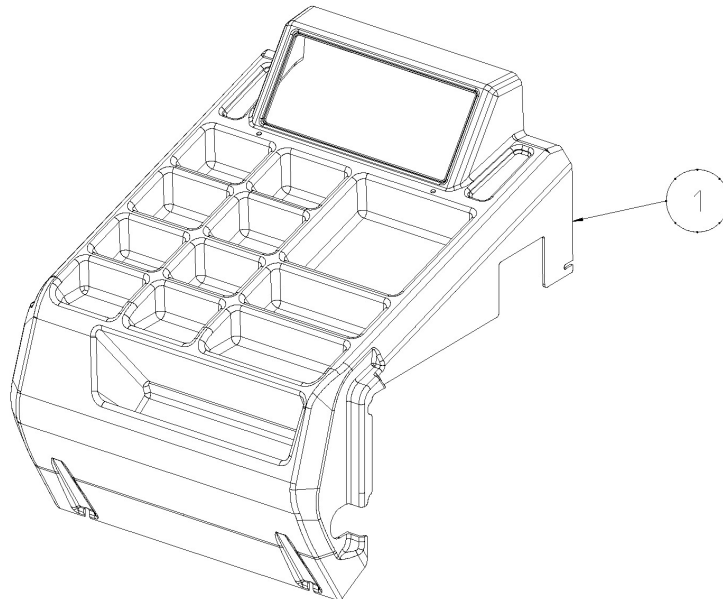
## Touch Panel

Item No	Part No.	Description
1	805PR031648	Membrane Panel .....SP....ST



## Weight Tray

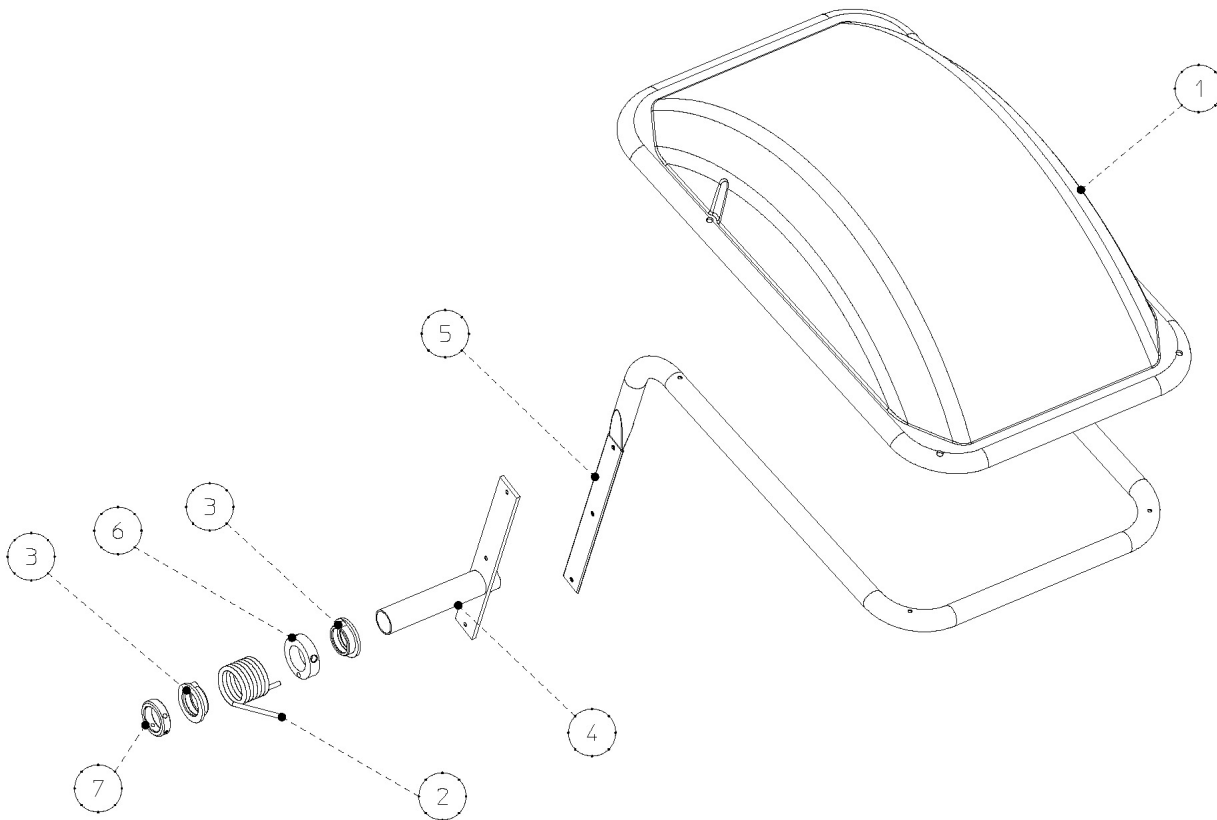
Item No	Part No.	Description
1	814FB026139	Weight Tray .....SP...NS



NA Not Available  
NS Non-stocking  
SP Service Part  
ST Stock

## Wheel Guard Assembly

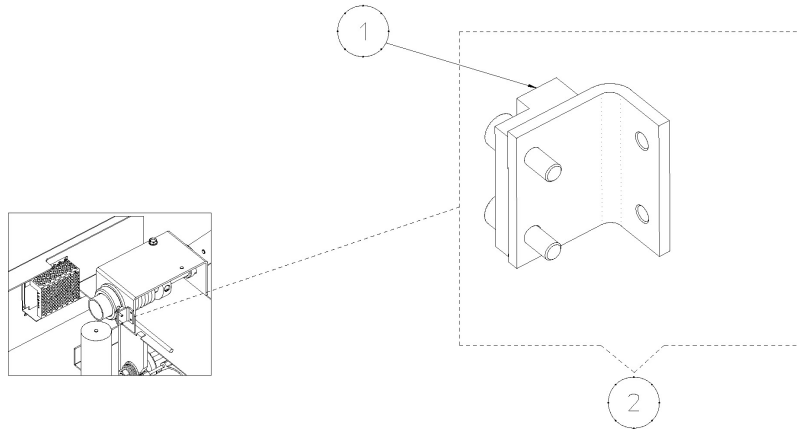
Item No	Part No.	Description
1	814FW019964	Wheel Guard..... SP... NS
2	818FW023250	Spring ..... SP....ST
3	8217019275	Bushing..... SP....ST
4	842FW018279	Internal Pipe..... SP... NS
5	842FW018809	Wheel Guard Support ..... SP... NS
6	842FW023266	Ring ..... SP....ST
7	846FW003503	Ring with Magnet ..... SP....ST



**NA**    **Not Available**  
**NS**    **Non-stocking**  
**SP**    **Service Part**  
**ST**    **Stock**

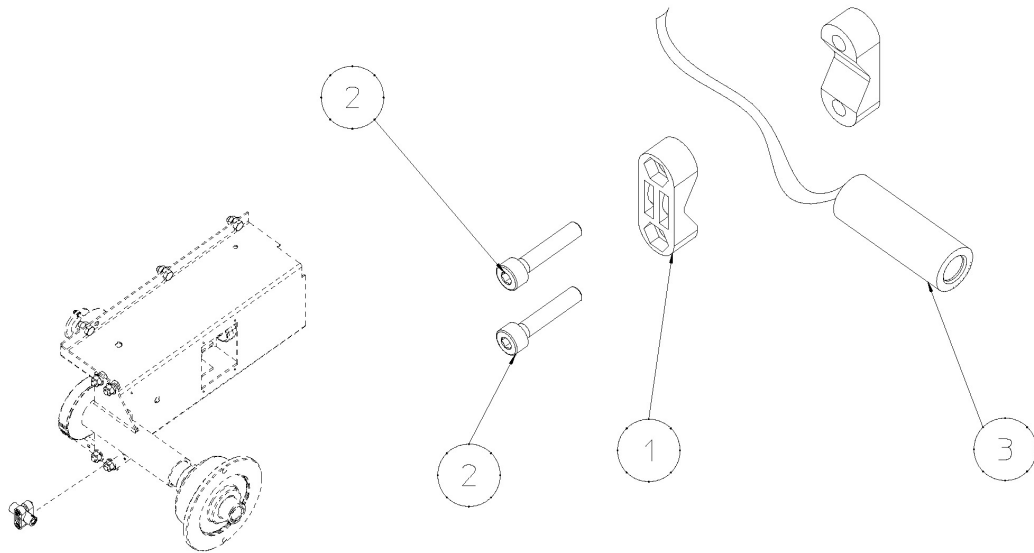
## Hood Switch

Item No	Part No.	Description
1	886SB023305	Magnetic Switch..... SP ....ST
2	886SB023307	Magnetic Switch..... SP ....ST



## Laser Assembly

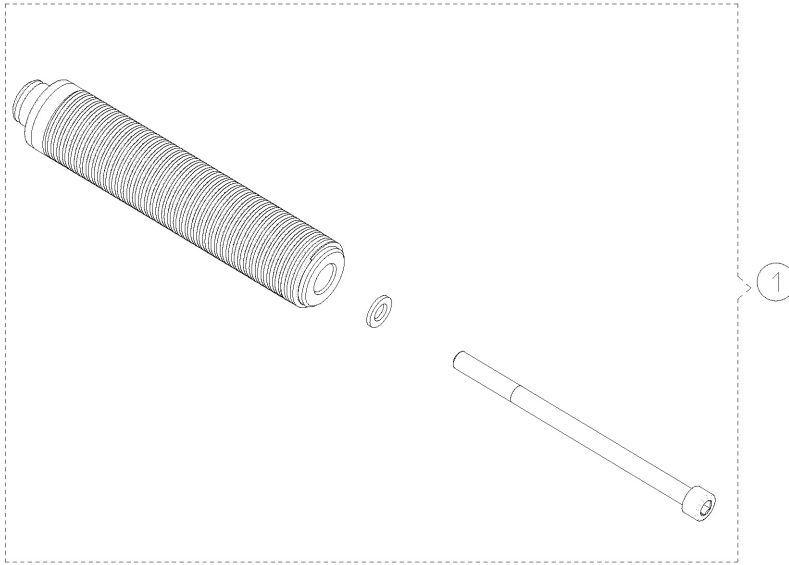
Item No	Part No.	Description
1	814RS95438	Laser Bracket..... SP ....ST
2	8312120038	Screw..... SP ....ST
3	886SBA1124	Laser..... SP ....ST



**NA**    **Not Available**  
**NS**    **Non-stocking**  
**SP**    **Service Part**  
**ST**    **Stock**

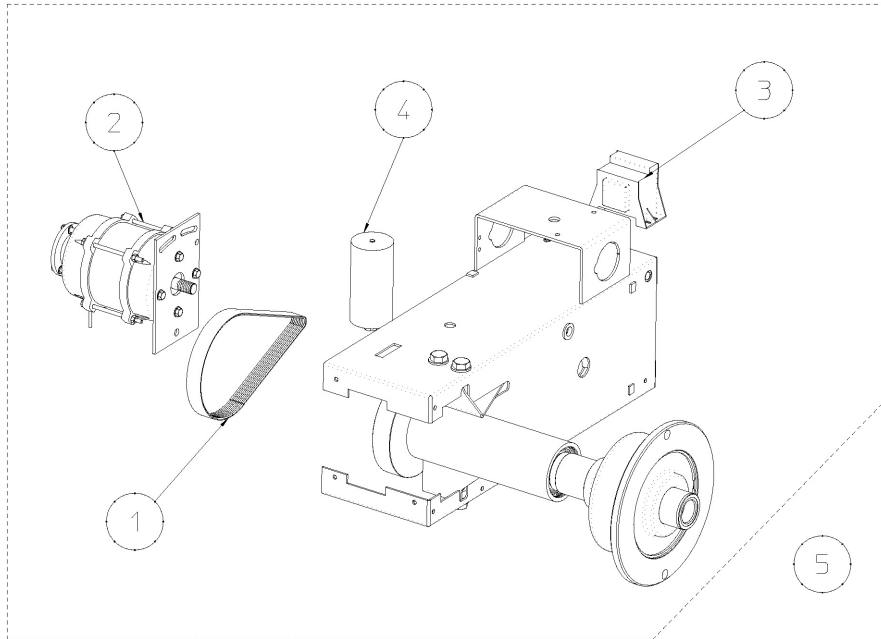
## Threaded Shaft

Item No	Part No.	Description
1	85009009	Threaded Shaft Assy..... SP....ST



## Complete Spindle 115V

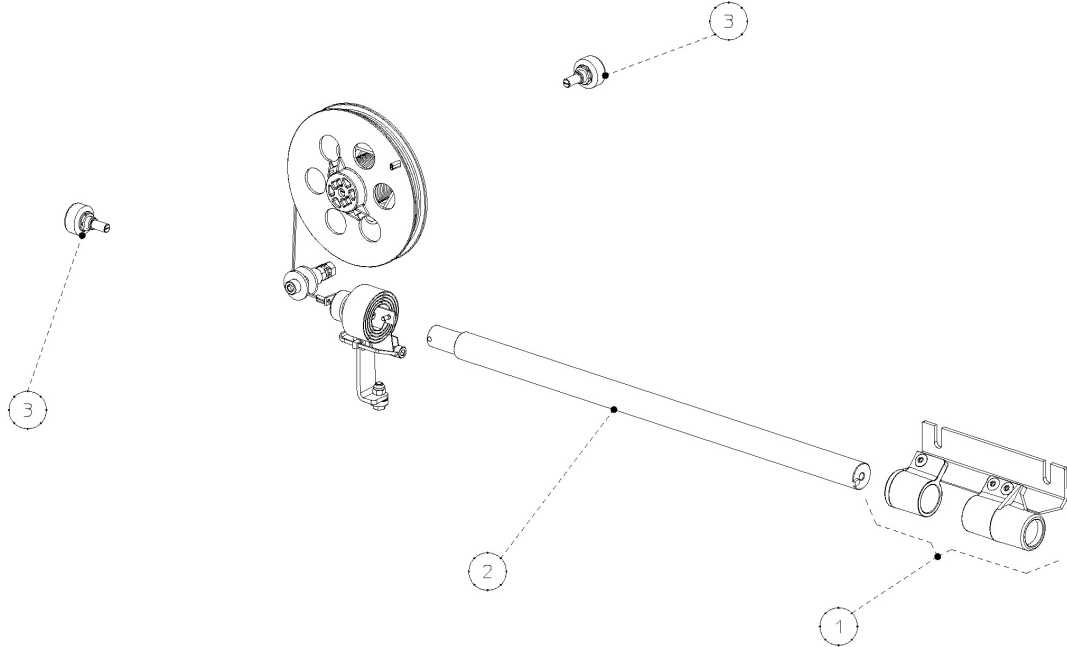
Item No	Part No.	Description
1	8080048009	Belt ..... SP....ST
2	850FG028974	Motor..... SP....ST
3	8090100004	Transformer 115V..... SP....ST
4	8568003558	Capacitor 115V..... SP....ST
5	846FB028975	Complete spindle 115V.... SP....ST



**NA**    **Not Available**  
**NS**    **Non-stocking**  
**SP**    **Service Part**  
**ST**    **Stock**

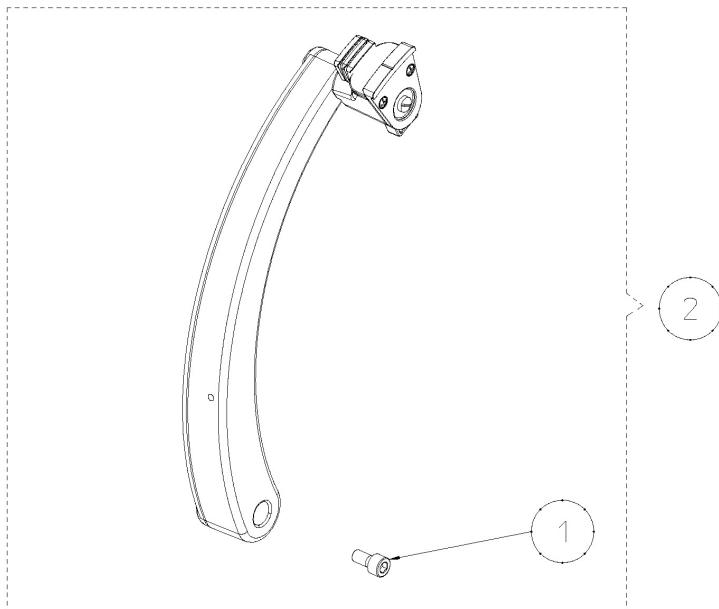
## A & D Arm Assembly

Item No	Part No.	Description
1	842FB018023	Bracket.....SP...NS
2	842FC018024	Rod .....SP...NS
3	886SB67291	Potentiometer.....SP....ST



## Index Gauge

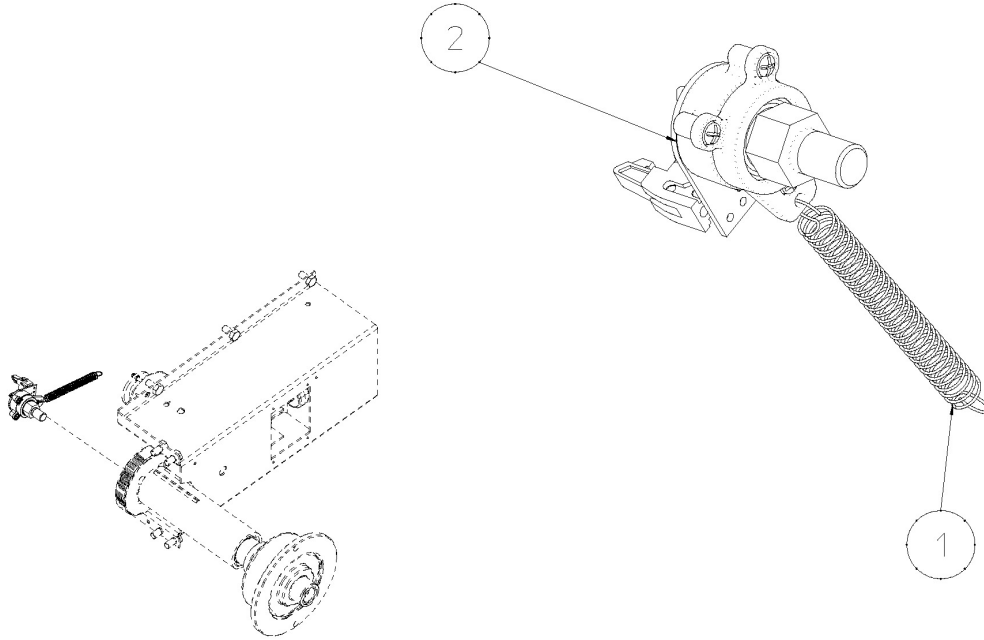
Item No	Part No.	Description
1	8312120069	Screw ..... N/A
2	846FC92123	Arm-Gauge,Indx .....SP...NS



**NA** Not Available  
**NS** Non-stocking  
**SP** Service Part  
**ST** Stock

# Encoder

Item No	Part No.	Description
1	818FB76761	Traction Spring .....SP....ST
2	886SD028551	Encoder .....SP....ST

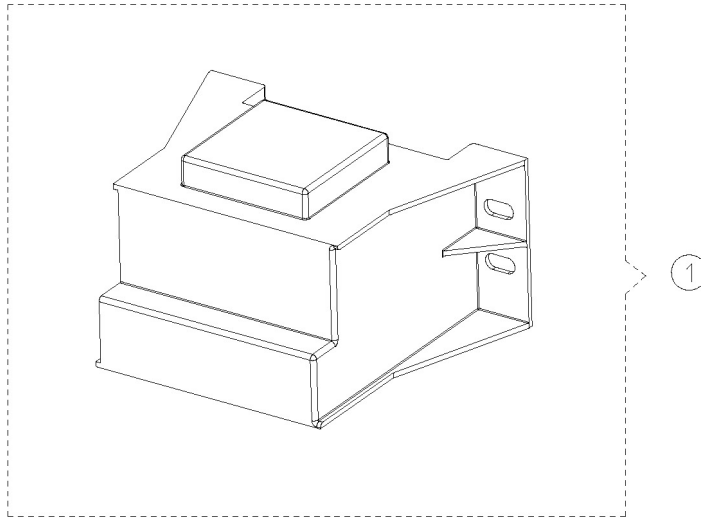


NA Not Available  
NS Non-stocking  
SP Service Part  
ST Stock



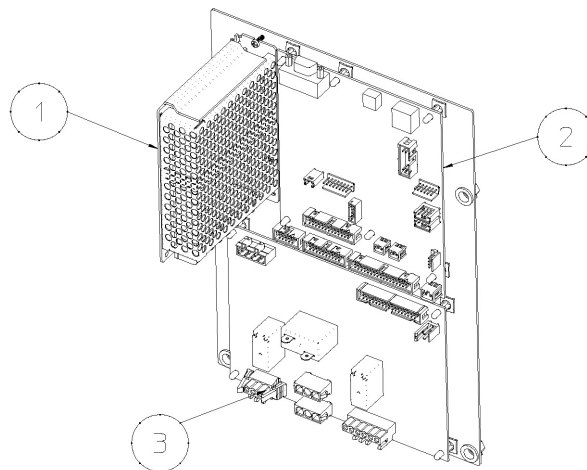
## 115V Transformer

Item No	Part No.	Description
1	8090100004	Transformer 115V ..... SP ....ST



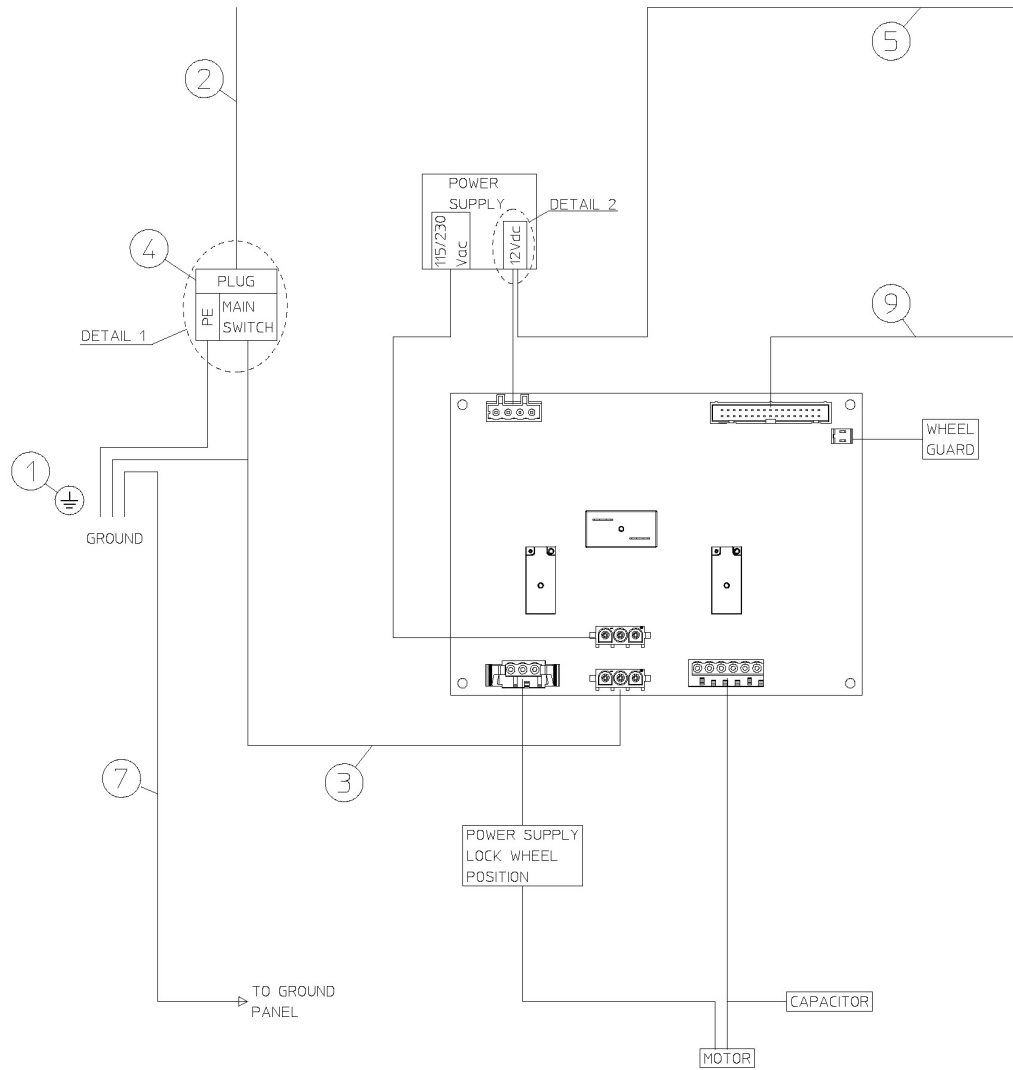
## Power Board

Item No	Part No.	Description
1	886SZ021156	Power Supply 12VDC ..... SP ....ST
2	886SC034331	Processor Card ..... SP ....ST
3	867D100058B	Power Board ..... SP ....ST



**NA**    **Not Available**  
**NS**    **Non-stocking**  
**SP**    **Service Part**  
**ST**    **Stock**

# Electrical Schematic



Item No	Part No.	Description
2	886SB018249	Power Plug..... SP ....ST
3	886SB021174	Cable..... SP ....ST
4	85101000080	Rocker Switch ..... SP ....ST
5	886SB026727	Power Cable..... SP ....ST
6	886SB39191	Wiring ..... SP ....ST
7	86SB63471	Ground Wiring..... NA
8	86SB75461	Flat Cable ..... NA
9	886SBA2000	Wiring ..... SP ....ST

**NA** Not Available  
**NS** Non-stocking  
**SP** Service Part  
**ST** Stock

# Electrical Schematic

